

**Library Branch MP 2.0 20' Concrete Slab Concrete Deck**

**Trail MP 36.0 Over Pleasant Road Near Library Freight House**

Built 1919 Removed & daylighted

The bridge was built during construction of Library Branch to Montour Mine #10 in 1919. The Library Freight House is to right of frame across road.



Tim Sposato photo

This view from similar angle in 2011 with bridge and abutments removed. Fill on left side of road was dug out and a house built at that location. The bridge was about where the tree shadow crosses the road.



Bryan Seip photo

This view from on top of bridge is looking west toward Library Viaduct, after abandonment of the railroad.



Tim Sposato photo

2011 view, looking west, shows remains of right-of-way with house across road.



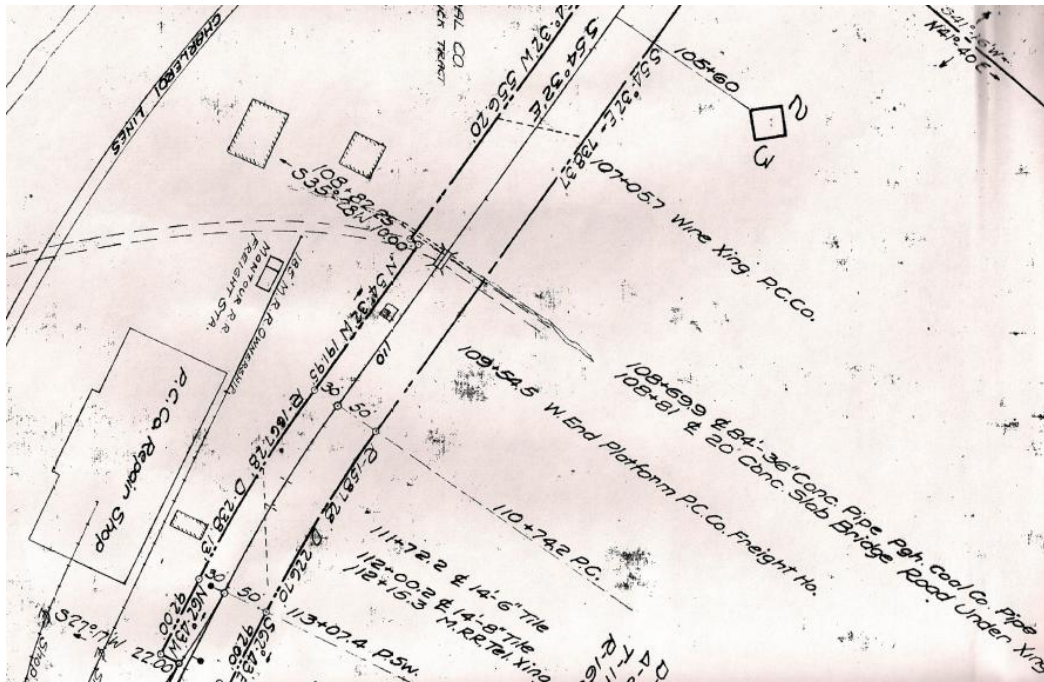
Bryan Seip photos

This view is looking east along a shallow cut, toward location of Montour #10.



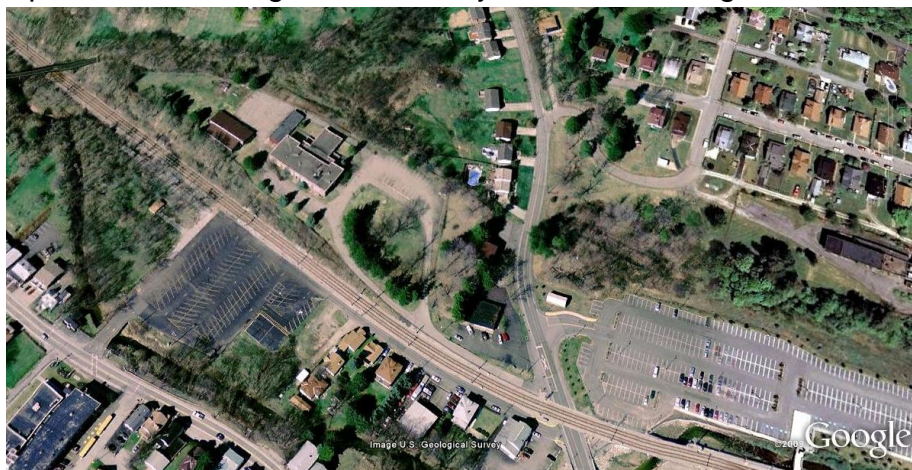


Valuation plan shows bridge near center. Dashed lines are Pleasant Road going under bridge. Rail lines at upper left marked Charleroi Lines are current PAT Trolley tracks. P. C. Co. Repair Shop was part of Montour #10 facilities & is now the parking lot for the Trolley Station. Montour RR Freight Station is noted to left of bridge beside road. North is at bottom right corner of picture.



Courtesy Greg Corcoran

Satellite view has bridge location at center, with Freight House just below, between parking lot and Pleasant Road, which runs top center to bottom. PAT Trolley tracks run top left to bottom right, with Library Viaduct crossing overhead at top left corner.



Compiled by Montour Railroad Historical Society members