

Library MP 2.9 32' Through Plate Girder Concrete Deck

Trail MP 36.5 Over Stewart Road

Built 1929 Bridge Removed – West concrete abutment remains

Looking north on Stewart Road. West abutment remains, east abutment has been removed and daylighted.



2011 photos Bryan Seip

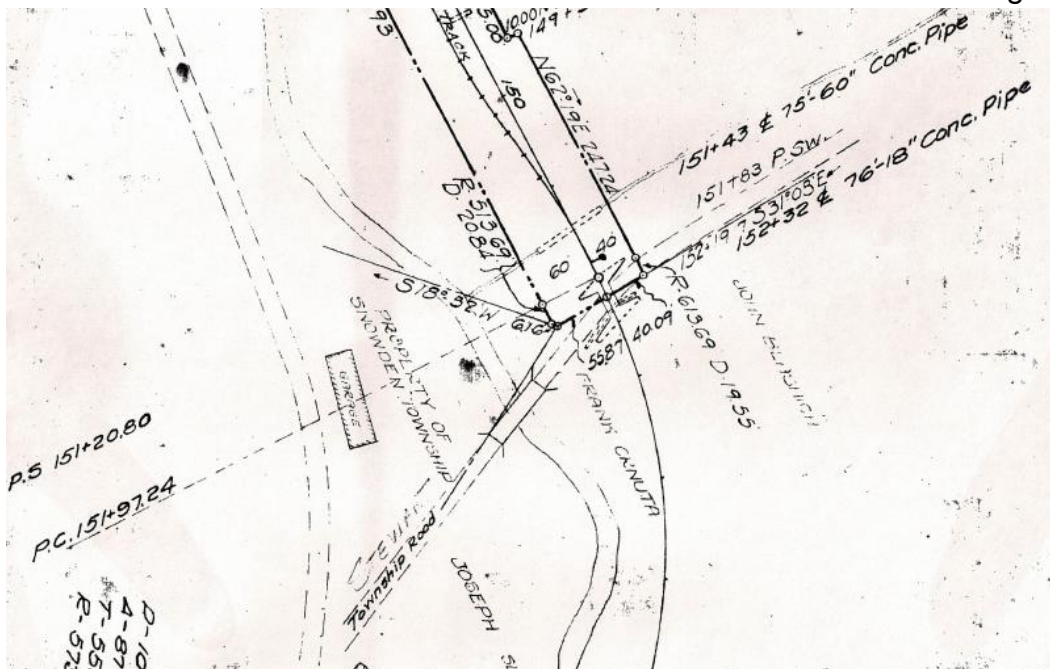
Date stamp in abutment unreadable due to deterioration of concrete – but probably built in 1929 during extension of Library Branch to Snowden interchange with B&O RR.



Satellite view shows bridge site above and left of center. Brownsville Road runs from lower left to lower right, Stewart Road at top left to intersection near center. The railroad ran along the driveway through the self-storage facility on left (white roofed buildings), crossed over Stewart Road and curved through right side of picture to bridge over Brownsville Road at lower right, beside the golf driving range.

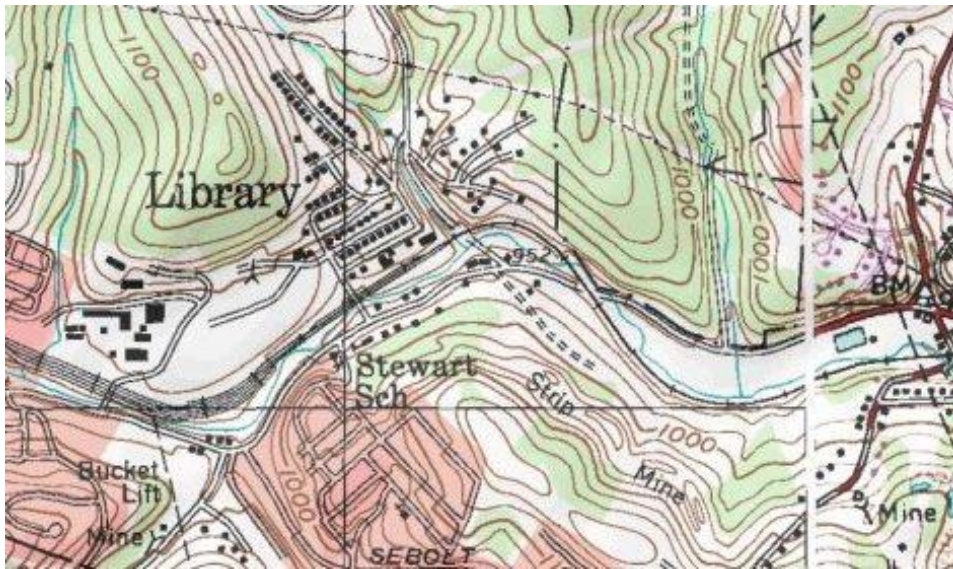


The valuation plan shows the railroad crossing the bridge near center. Brownsville Road shown on left side of frame. Township Road marked on plan with notation of Stewart Road above it. Piney Fork Creek runs between Brownsville Road and Railroad. North is at right of frame.



Courtesy Greg Corcoran

Topo map shows bridge at center. Railroad follows valley along Piney Fork Creek. Brownsville Road runs across center. Montour #10 yard tracks at left, with Brownsville Road Extension at right edge.



Courtesy Bob Ciminell / USGS

Compiled by Montour Railroad Historical Society members.