

Library MP 3.0 24' Concrete Arch

Trail MP 36.8 Over Piney Fork Creek near Brownsville Road bridge

Built 1929 - Date in concrete arch

Looking north from Brownsville Road side. 1929 stamp in concrete over top of arch.



Bryan Seip photos

Looking east along Trail at bridge site, with Brownsville Road bridge about 100 yards away. While on Trail, it is hardly noticeable that you are crossing a bridge.



North portal looking toward Brownsville Road. 1929 date stamp is on both portals.



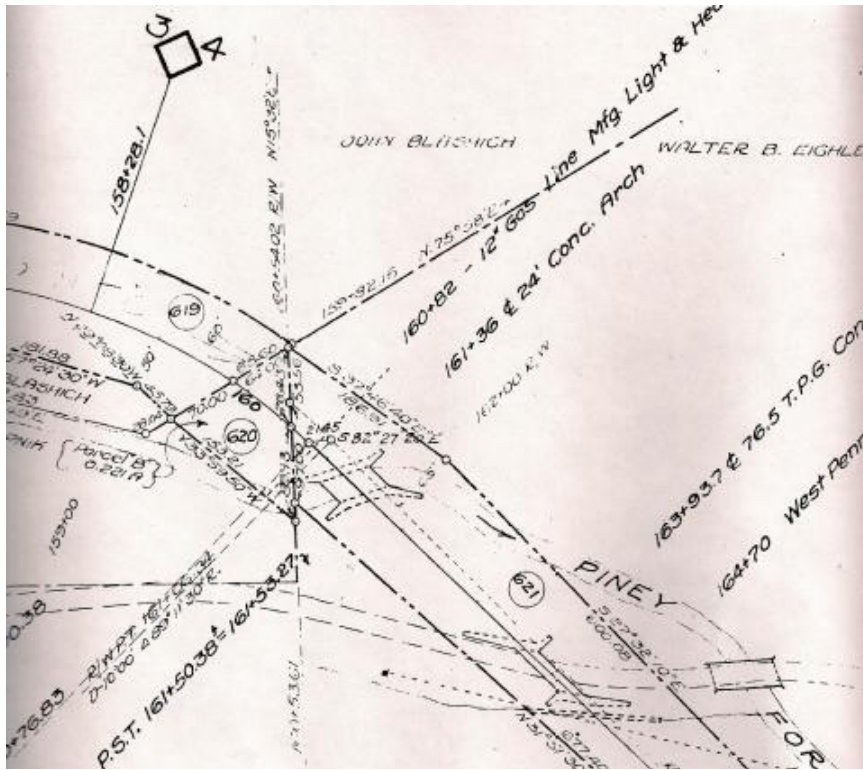
1967 aerial view shows bridge at center, over Piney Fork Creek. Brownsville Road runs across lower frame with Stewart Road from top left to intersection near center. Golf driving range is at bottom center. Similar satellite view is below.



Courtesy Penn Pilot

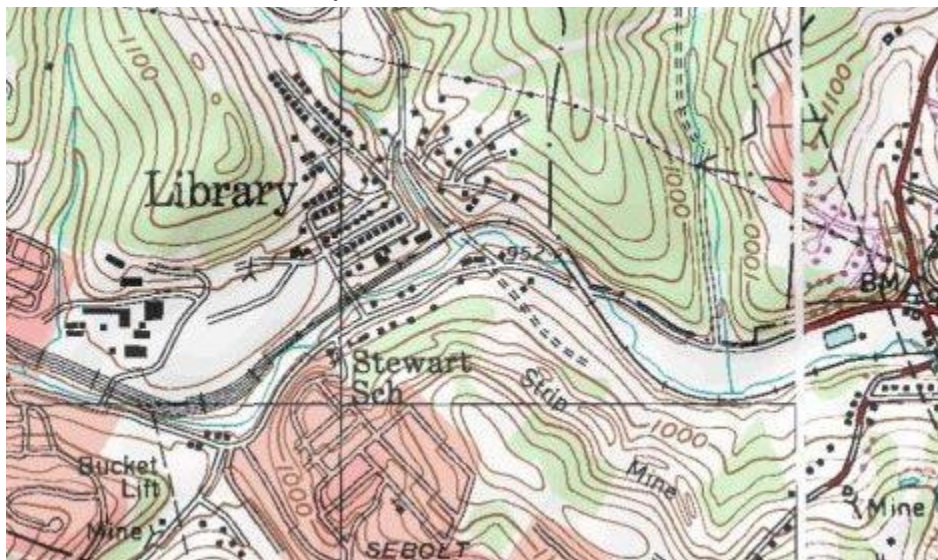


Valuation plan shows bridge near center, with Piney Fork Creek flowing under bridge. Brownsville Road runs across lower part of frame as dashed lines.



Courtesy Greg Corcoran

Topo map shows bridge site near center over Piney Fork Creek. Bridge is beside the "2" in "952" marking. Brownsville Road and Montour Railroad run parallel across frame with Stewart Road at top center.



Courtesy Bob Ciminel / USGS

Compiled by Montour Railroad Historical Society members