

Library Branch MP 3.7 36' Through Plate Girder Concrete Deck

Trail MP 37.5 Over Piney Fork Creek adjacent to Brownsville Road Extension

Builder's Plate: Built By McClintic-Marshall Company Pittsburgh, Pa. 1929

View looking north towards intersection of Brownsville and Piney Fork Roads.



Bryan Seip photos

Builder's Plate: Built By McClintic-Marshall Company Pittsburgh, Pa. 1929



View looking west in the 1970's. 1929 date is stamped in concrete abutment. Due to weathering and deterioration of the concrete, the date is no longer visible.



Gene P. Schaeffer photo

Satellite view shows bridge at lower center, to left of Brownsville Road Extension grade crossing. Brownsville Road curves through upper left, Piney Fork Road from intersection to right center and Brownsville Road Extension from intersection to bottom center.



Google Maps

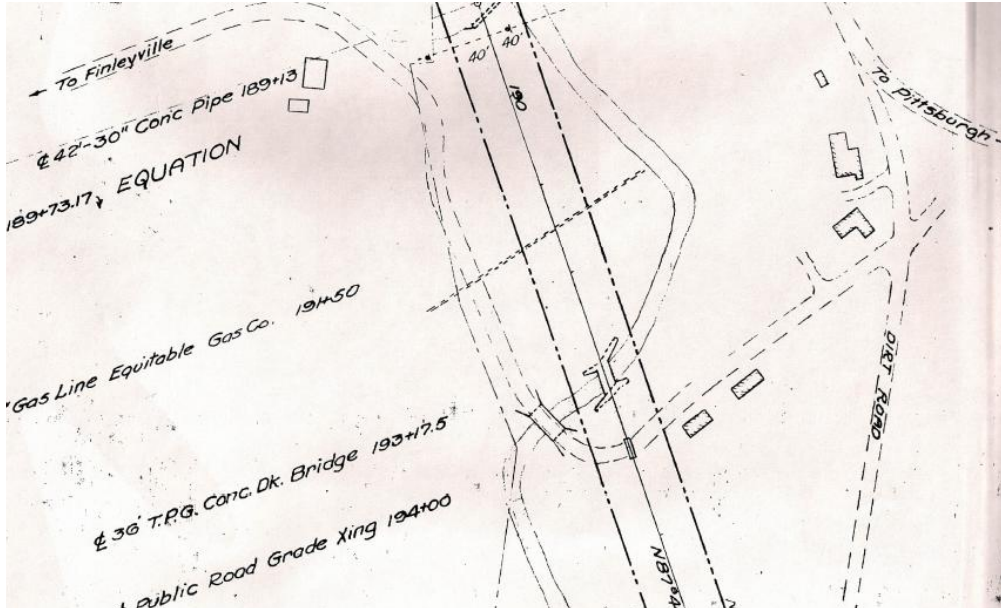
Looking east toward road crossing. Safety railings were added when the trail was constructed.



Looking south with Brownsville Road Extension bridge in background. Operations over this section of the Library Branch ended in 1975 and the branch was officially abandoned in 1979.

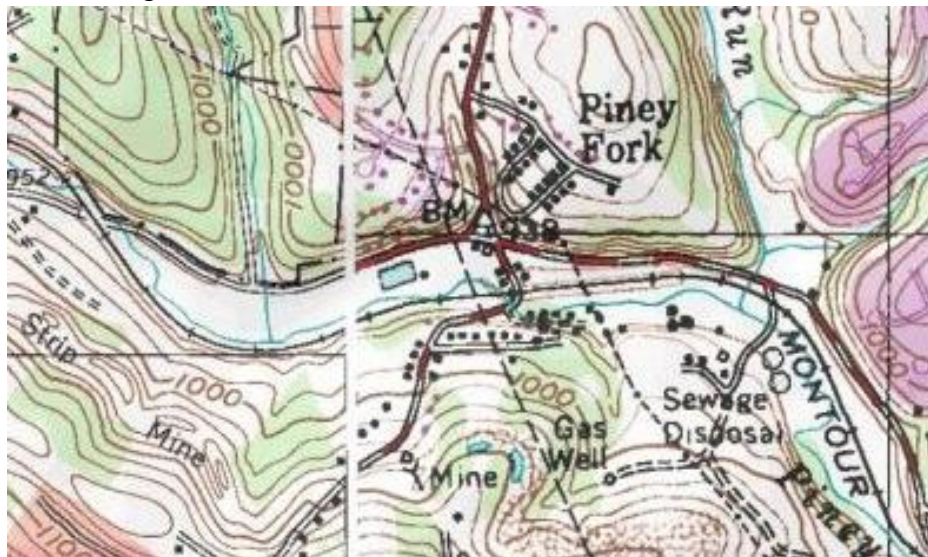


Valuation plan shows bridge near center of frame. Road marked "To Pittsburgh" in top right corner is Brownsville Road. "To Finleyville" in top left is Brownsville Road Extension. "Dirt Road" at lower right is Piney Fork Road and Piney Fork Creek flows from top to bottom. North is at right of frame.



Courtesy Greg Corcoran

Topo map shows bridge at center, over Piney Fork Creek. Brownsville Road runs from left center & curves up to top center. Piney Fork Road runs from intersection at center to lower right. Brownsville Road Extension runs from intersection to bottom left.



Courtesy Bob Ciminel / USGS

Compiled by Montour Railroad Historical Society members.