

MP 10.7 24' Arch Concrete

Mile 9.7 Trail MP 8.7 Over Montour Run at Imperial

Between Main Street & Rt 30 – near Rt 30 bridge

Looking south from Main Street side



2010 photos Bryan Seip

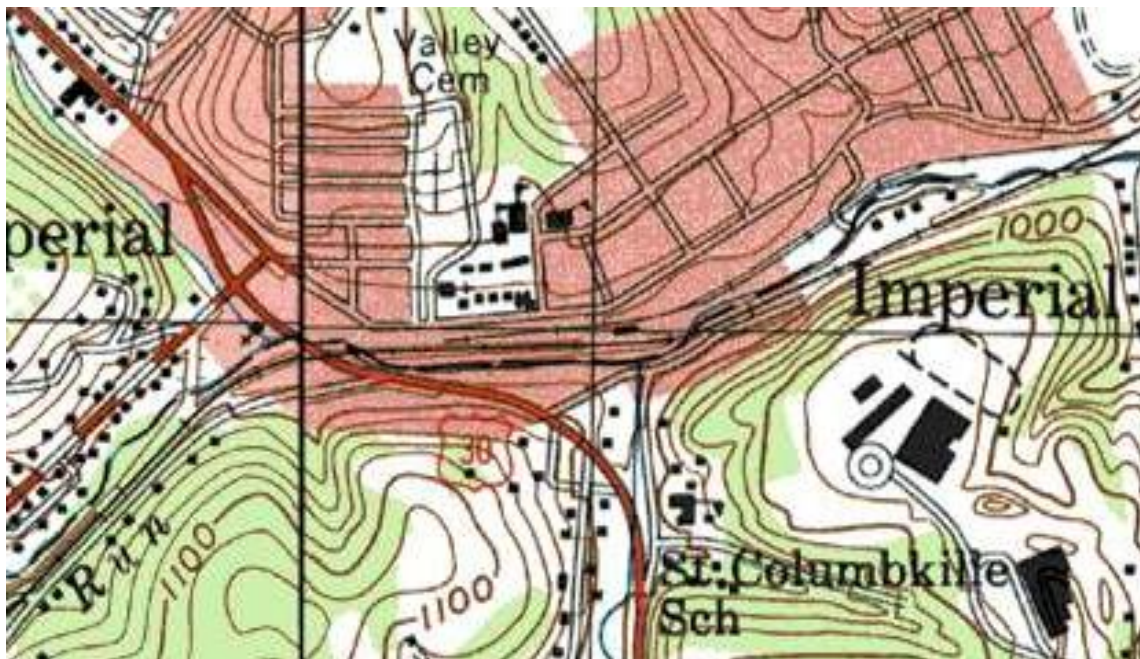
1928 in concrete. This bridge is one of five built during 1928 realignment of main line through Imperial to eliminate grade crossing at Rt. 30.



Looking north from Rt 30 side

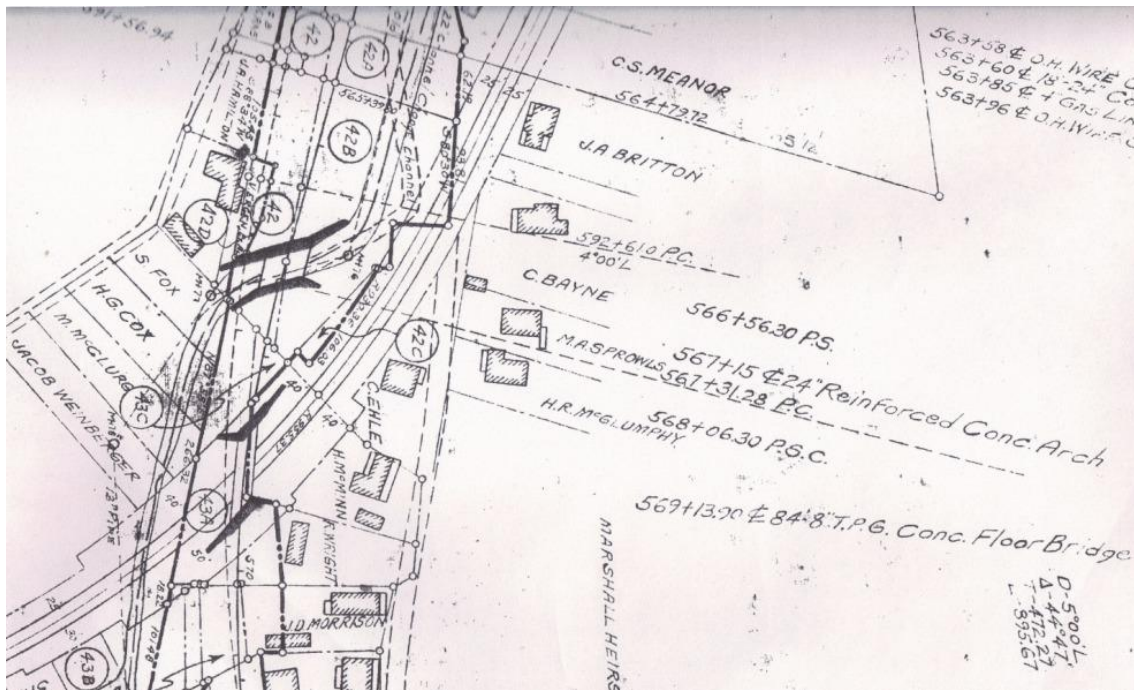


Topo map shows this bridge crossing Montour Run to left of center, beside red highway, which is Rt 30.



Courtesy Bob Ciminel

Valuation Plan shows 24 foot Reinforced Concrete Arch bridge at upper left at circle 42, note at top left at circle 42A notation for old channel and channel change. Rt. 30 curves from top center to lower left.



Courtesy Greg Corcoran

Satellite view shows bridge at center of picture, about 50 yards to right of Rt 30 bridge. Rt 30 runs from top left to bottom right, with Main Street in upper right quadrant.



Google Images

Compiled by Montour Railroad Historical Society members