

MP 10.8 84'8" Through Plate Girder Concrete Deck

Mile 9.8 Trail MP 8.9 Over Rt. 30

No Builder's Plate – No dates in concrete

This bridge replaced a grade crossing at Rt 30 during 1928 realignment – this view in 1930 looking east on Rt. 30. Concrete guardrails in front of bridge are for Montour Run flowing under roadway bridge.



Gene P. Schaeffer collection

Similar view in 2010. One of five bridges built during realignment project.



2010 photos Bryan Seip

Looking west on Rt 30



View looking east (RR westbound) – toward Findlay Activity Center. Through Plate Girder and skew construction are evident in this picture, as is concrete deck which supported ties & rails on ballast laid across deck.

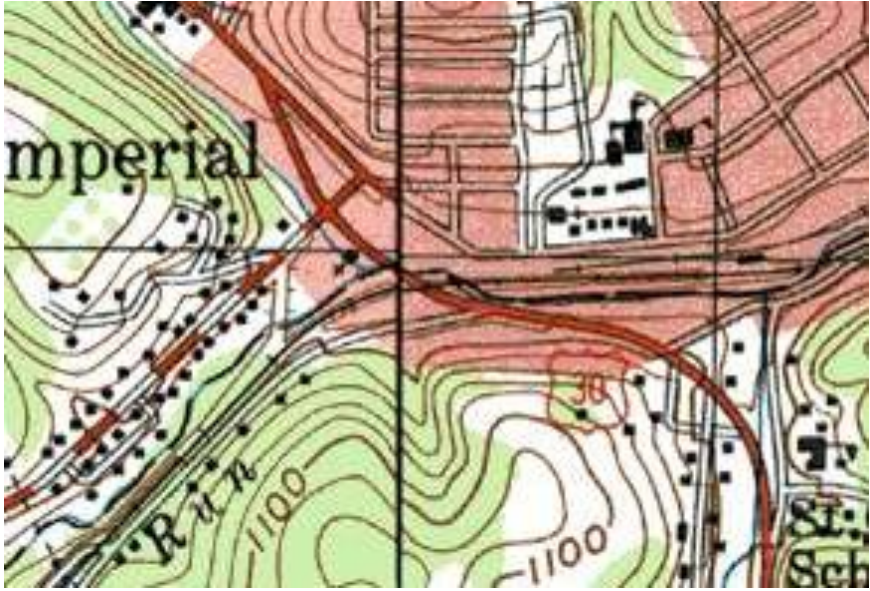


Mike Thompson photo

Satellite view shows bridge at center over Rt. 30. Santiago Road is at upper left of picture and North Star Road in lower left quadrant.



Topo Map shows bridge at center, with Rt. 30 in red. Santiago Road is red & white dashed road at left side. Main Street runs above railroad from top left to right side.



Courtesy Bob Ciminel

