

MP 15.5 12' Concrete Arch

Mile 14.4 Trail MP 13.4 Over stream at Geary Curve

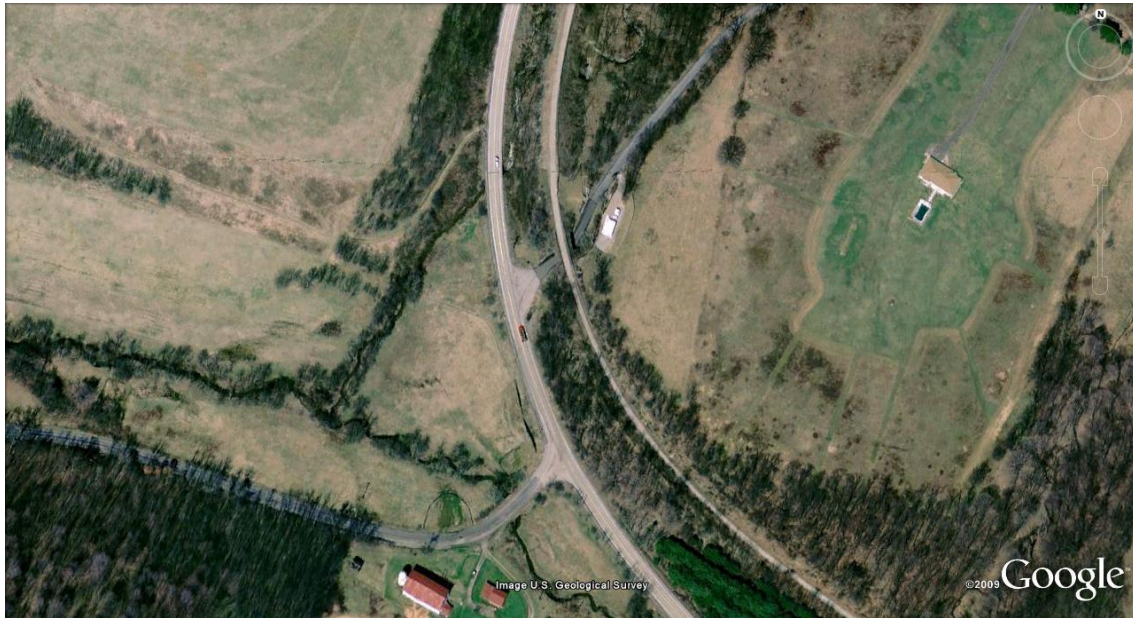
Along Rt 980 near Beagle Club Road – no dates evident in concrete.

These views are looking east from Rt 980. Summer growth hides view of bridge.



2010-2011 photos Bryan Seip

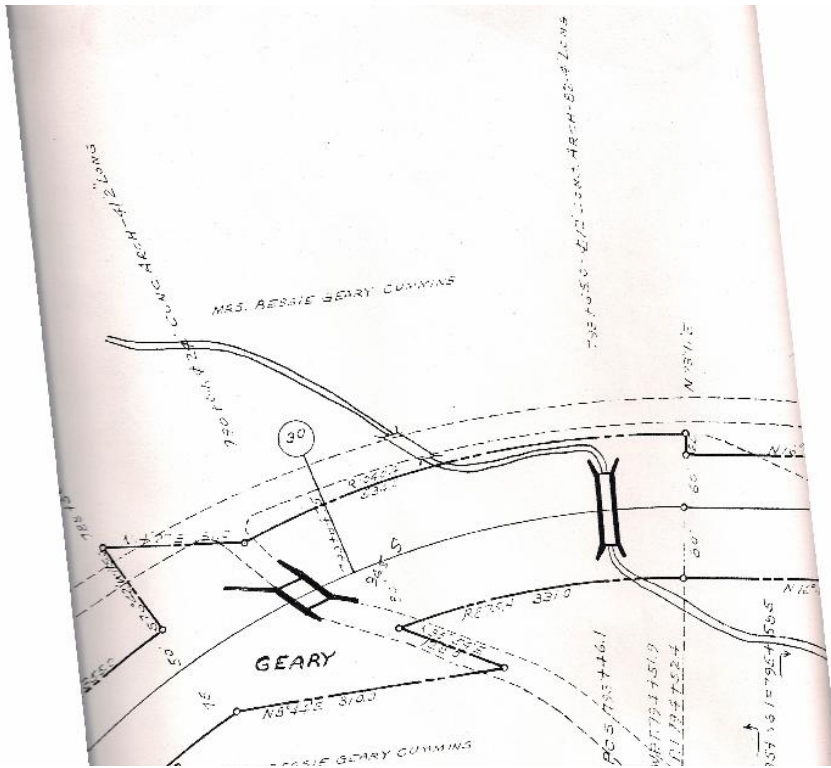
Satellite view includes bridge at upper center. Rt 980 runs from top center to bottom, Beagle Club Road from center to top right, Beech Hollow Road at lower left. Geary farm is at bottom center. Bridge is approx. 100 yards north of Beagle Club Road.



This view is from Beagle Club Road on inside of curve, looking west toward Rt 980.



Valuation Plan shows bridge at right over stream. Noted as 82'4" long.



Courtesy Greg Corcoran

Compiled by Montour Railroad Historical Society members