

**MP 15.6 24' Concrete Arch**

**Mile 14.5 Trail MP 13.5 Over Beagle Club Road at Geary Curve**

View looking east from intersection of Rt 980 & Beagle Club Road



2010 photos Bryan Seip

Similar view, during construction in 1913, with the date in the concrete above the arch.

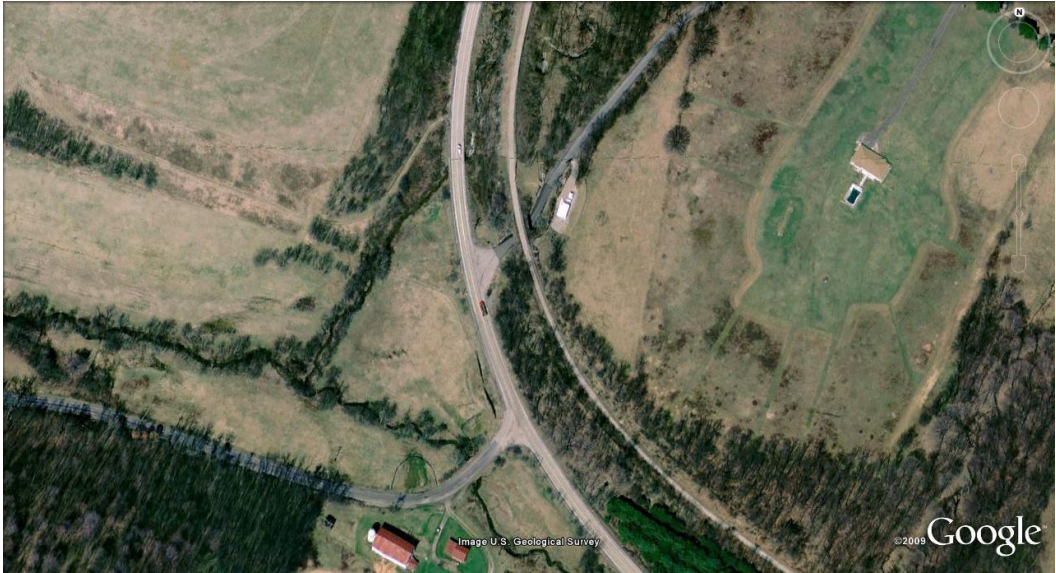


Photo courtesy Dave Richards/Gene P. Schaeffer collection

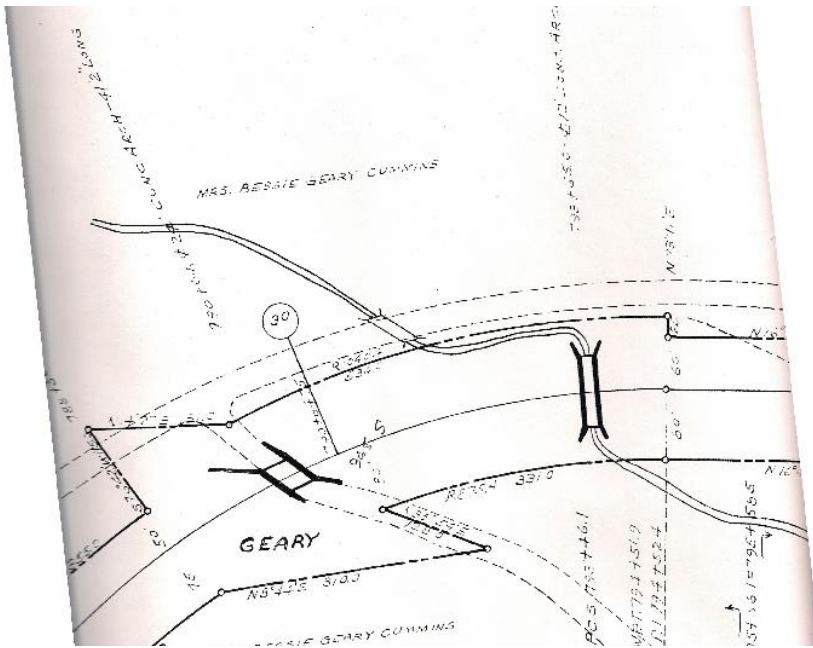
Looking west from Beagle Club Road, with Rt. 980 beyond bridge.



Satellite view shows bridge at center of frame. Rt. 980 runs from top to bottom, with Beagle Club Road in upper right and Beech Hollow Road at lower left. Geary Farm barn is at bottom center.



Valuation Plan shows this bridge on the left. Note skew construction and angled wing walls. Bridge noted as 41' 2" in length. Rt. 980 runs left to right, with Beagle Club Road at bottom of frame.



Courtesy Greg Corcoran

The topo map shows Rt. 980 and the railroad running from top to bottom, along a valley. Beech Hollow Road runs from center to left edge, along an intersecting valley. The bridge over Beagle Club Road is at center. Note lower left corner, where a portion of the Geary Farm is shown as a strip mine.



Courtesy Bob Ciminel

In 1984, P&LE engines are removing box cars stored on the Montour Railroad. They are rounding Geary Curve and cross the bridge at Beagle Club Road, with the Geary farm house in the background across Rt 980. This was one of the last train movements on the Montour Railroad.



Gene P. Schaeffer photo

Compiled by Montour Historical Society members.