

MP 17.2 8' Concrete Slab

Mile 16.1 Trail MP 15.1 Over Drainage Stream at Montour #9 Patch Houses

Along Rt. 980 behind patch houses. No markings evident. Drainage flows under bridge which is filled with dirt & debris View from north side of Trail, behind patch houses

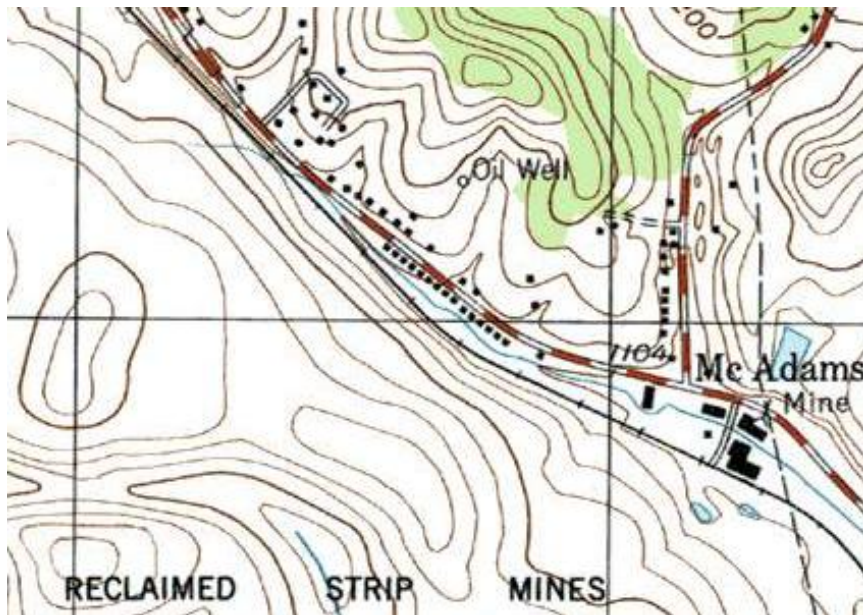


2010 Photos Bryan Seip

South side with ditch opened up. Patch houses along Rt. 980 are in background.

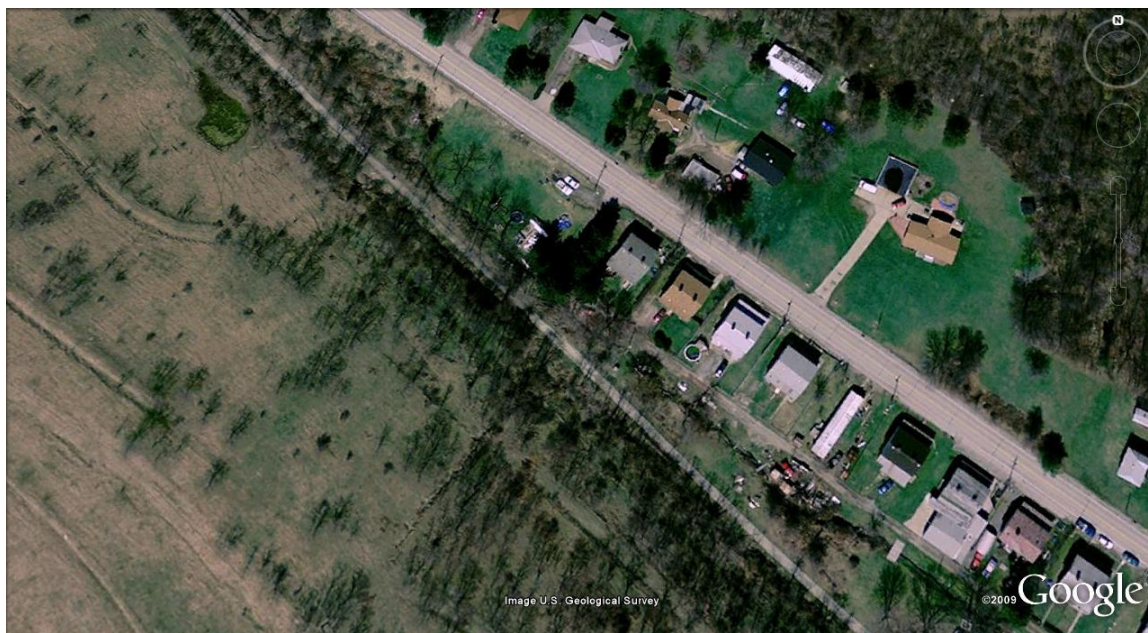


Bridge is about center of frame, but not marked on the topo map. Row of patch houses along Rt. 980 at center has bridge behind upper-left-most house. Note small stream running behind houses. This bridge drains hillside across railroad into the stream. Rt. 980 runs from top left to bottom right. Road at right side with intersection at “McAdams” is N. Branch Road.



Courtesy Bob Ciminel

Satellite view shows patch houses along Rt. 980. Bridge is behind first house on the left end of the row.



Compiled by Montour Railroad Historical Society members