

MP 17.6 8' Concrete Slab

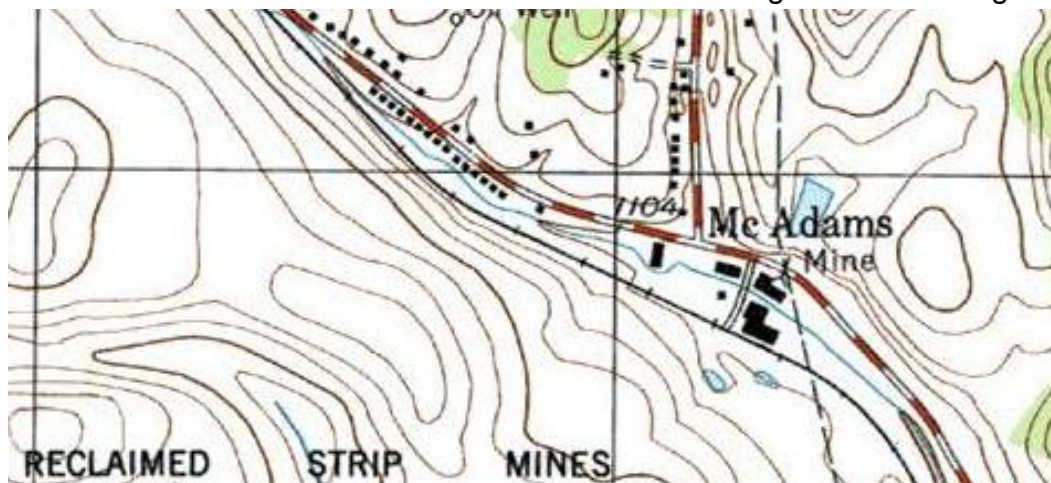
Mile 16.5 Trail MP 15.5 Over Stream at McAdams/Montour Mine #9

Along Rt 980, bridge is behind Donart Electronics building. No markings evident. Small stream flows under bridge, which is partially filled with dirt & debris



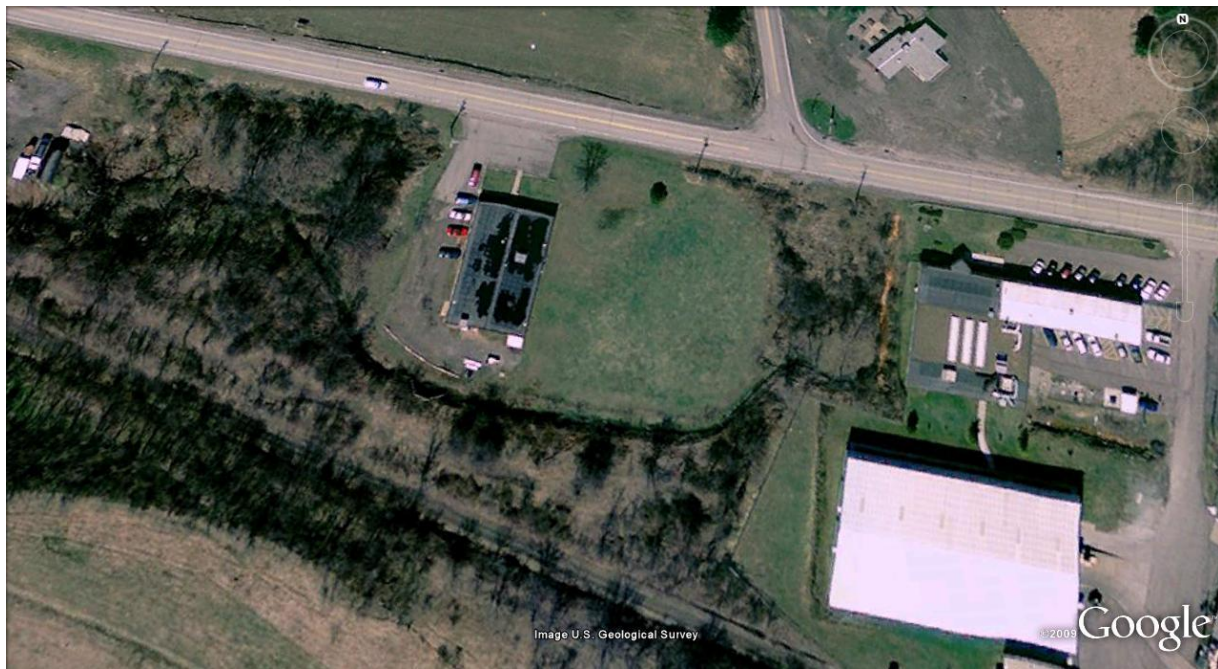
2010 Photo Bryan Seip

Topo map shows Donart building near center, across road from "1104" marking. Bridge drains hillside behind railroad into small stream running behind buildings along Rt. 980.



Courtesy Bob Ciminel

Satellite view shows portal of bridge to left of center, at tree line behind left rear corner of Donart Electronics building. Rt. 980 runs across frame with N. Branch Road intersection at top right.



Compiled by Montour Railroad Historical Society members