

MP 21.0 24' Concrete Arch

Mile 20.0 Trail MP 19.0 Over Primrose Road

View looking east. No date evident in concrete.



2010 photos Bryan Seip

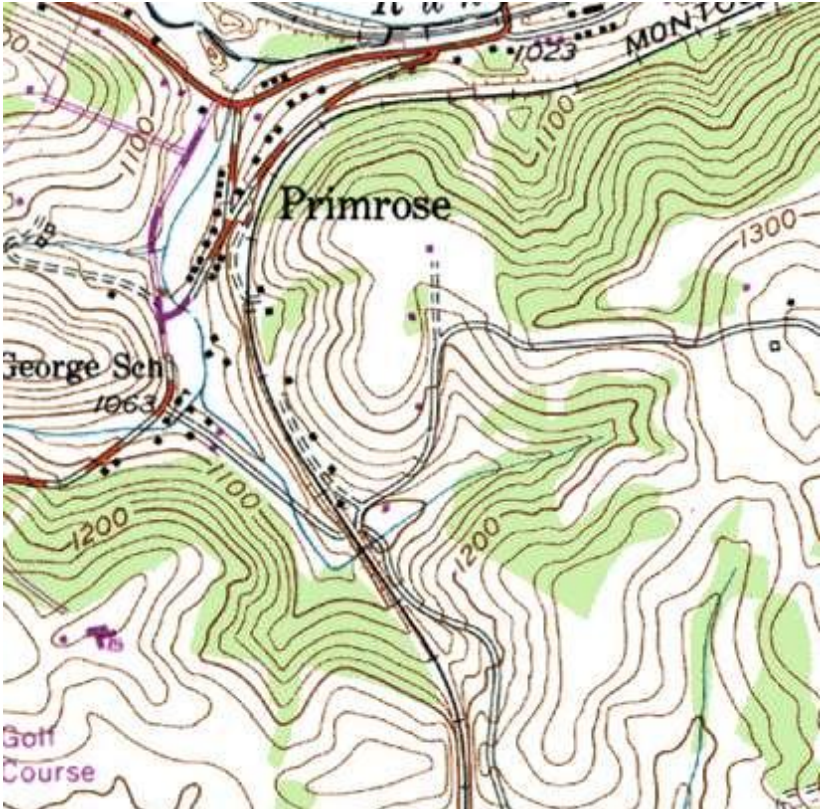
This view looking west, standing at intersection of Primrose & Jacobs Roads. Railroad eastbound runs to left of picture.



Satellite view shows bridge and Primrose Road at lower right. Fort Cherry Road is at upper left & Jacobs Road at middle right.

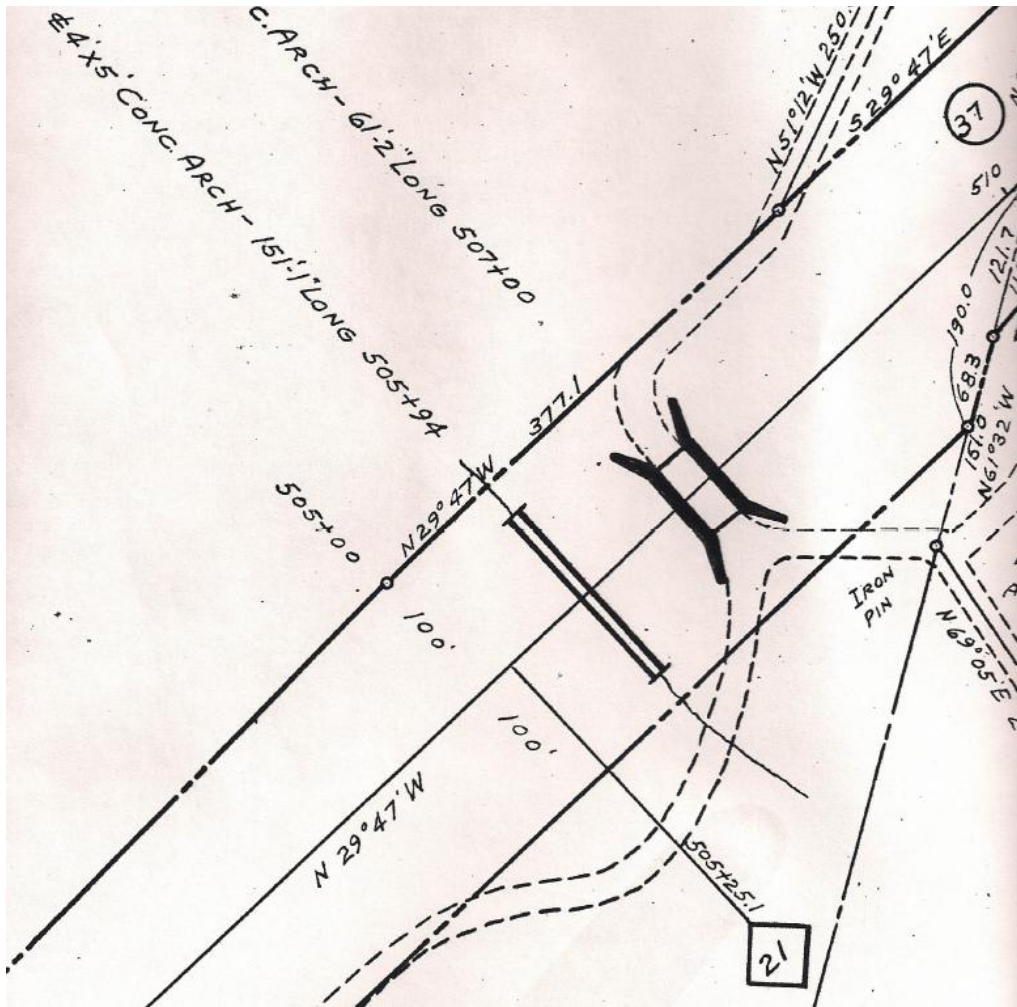


Topo map shows bridge just below center. Railroad coming off McDonald viaduct curves around hillside and crosses bridge before entering deep cut at lower center. Golf Course noted at lower left is Ft. Cherry Golf Club.



Courtesy Bob Ciminel

Valuation plan shows 61' 2" long bridge with adjacent 4x5 foot culvert. MP 21 noted near bridge. Primrose Road makes "S" curve through bridge. North is at top right of this picture.



Courtesy Greg Corcoran

Compiled by Montour Railroad Historical Society members