

**MP 22.7 24' Concrete Arch**

**Mile 21.6 Trail MP 20.6 Over Southview Road**

View looking west from Primrose Road toward Southview - 1913 in concrete



2010 photos Bryan Seip

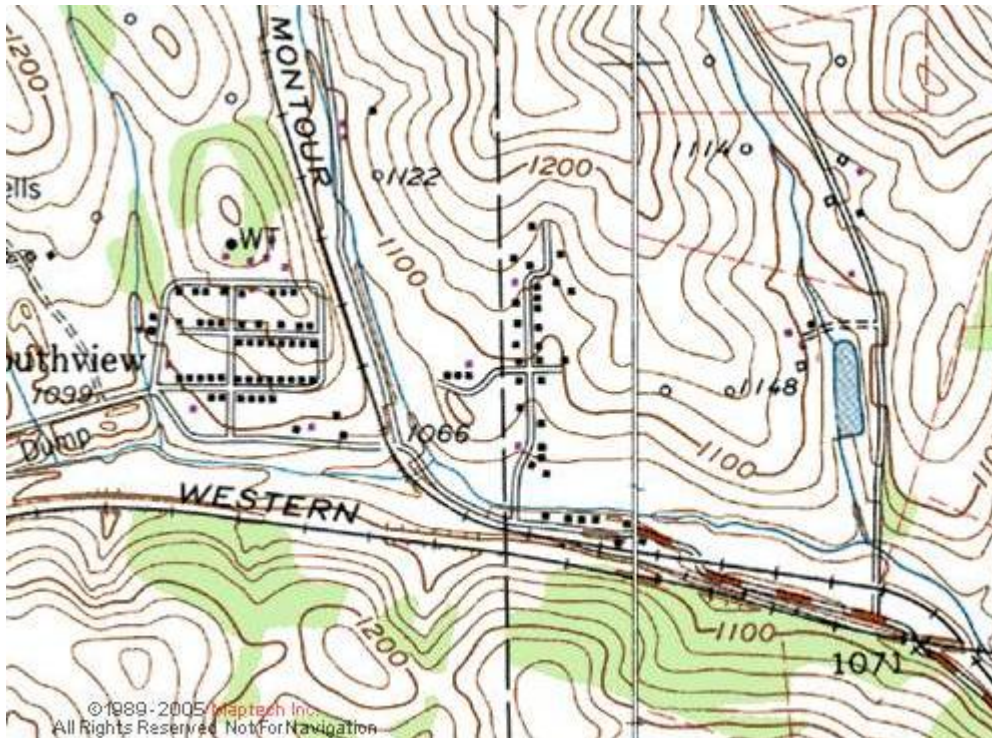
Looking east toward Primrose Road intersection. 1913 is in concrete above arch.



Satellite view shows Southview Road curving under bridge and going into Southview. Primrose Road parallels Trail at top of frame.

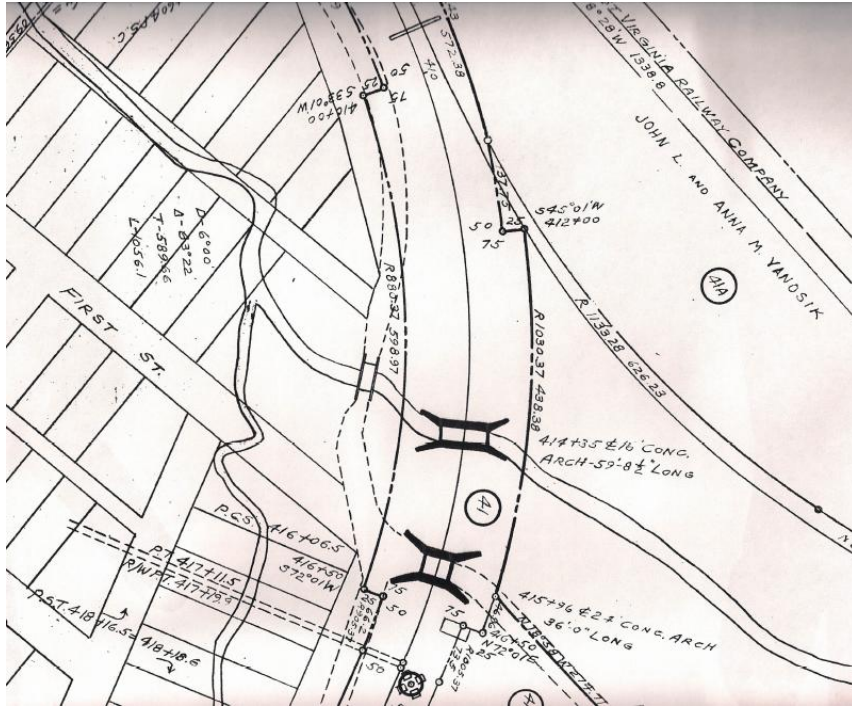


Topo map shows bridge below & left of center, near Southview patch houses. Current Wheeling & Lake Erie Railroad running across bottom is labeled Norfolk & Western. Montour enters at top and curves down to bottom right.



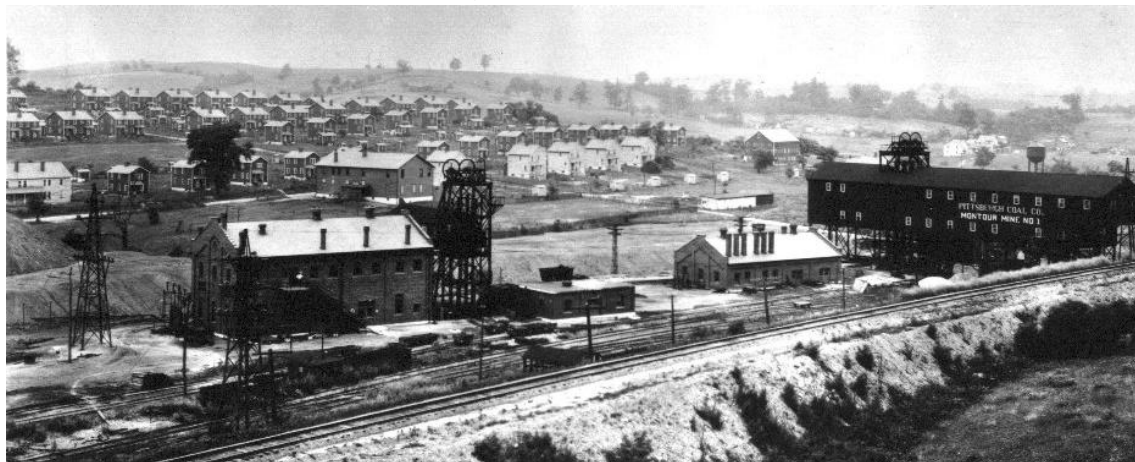
Courtesy Bob Ciminel

Valuation plan shows bridge at bottom. On this plan the W&LE railroad is labeled Pittsburgh & West Virginia Railway Company. Note water tower beside Montour tracks at bottom of plan. Footings from tower are still in existence beside Trail. North is at bottom of plan.



Courtesy Greg Corcoran

View of Montour Mine #1 at Southview, looking northeast, ca. 1927. Some foundations from mine buildings still remain. The Montour main line is at far side of the patch houses, with the bridge over Southview Road behind the tipple building roof. P&WV – current W&LE – runs across foreground. Tipple loads on spur from Montour.



Gene P. Schaeffer collection

Compiled by Montour Railroad Historical Society members