

MP 22.8 16' Concrete Arch

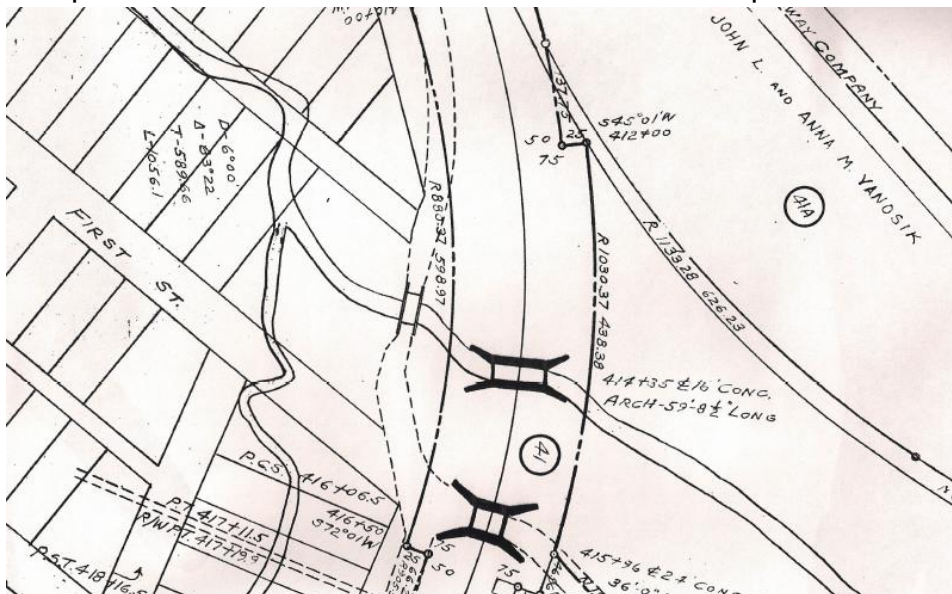
Mile 21.7 Trail MP 20.7 Over creek along Southview Road

View looking west – toward Southview. 1913 is stamped into concrete above arch on both ends of the bridge.



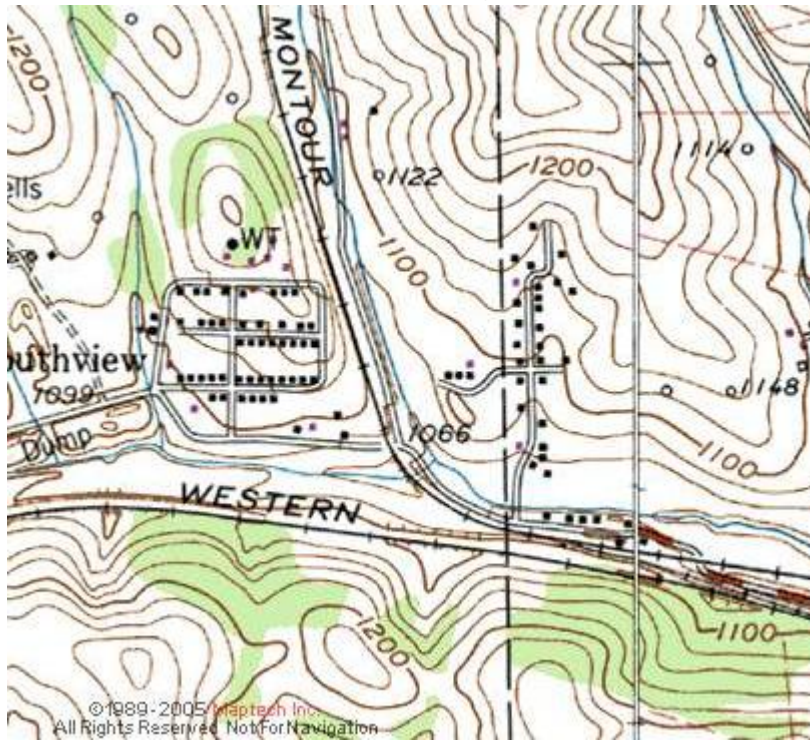
2011 photo Bryan Seip

Valuation Plan shows bridge over stream at center of frame. One-lane hump-back bridge on Southview Road is to left of railroad bridge. W&LE RR in upper right corner. Railroad center line curving from main line at top center to lower right along creek was the spur into Montour Mine #1. North is at bottom of picture.



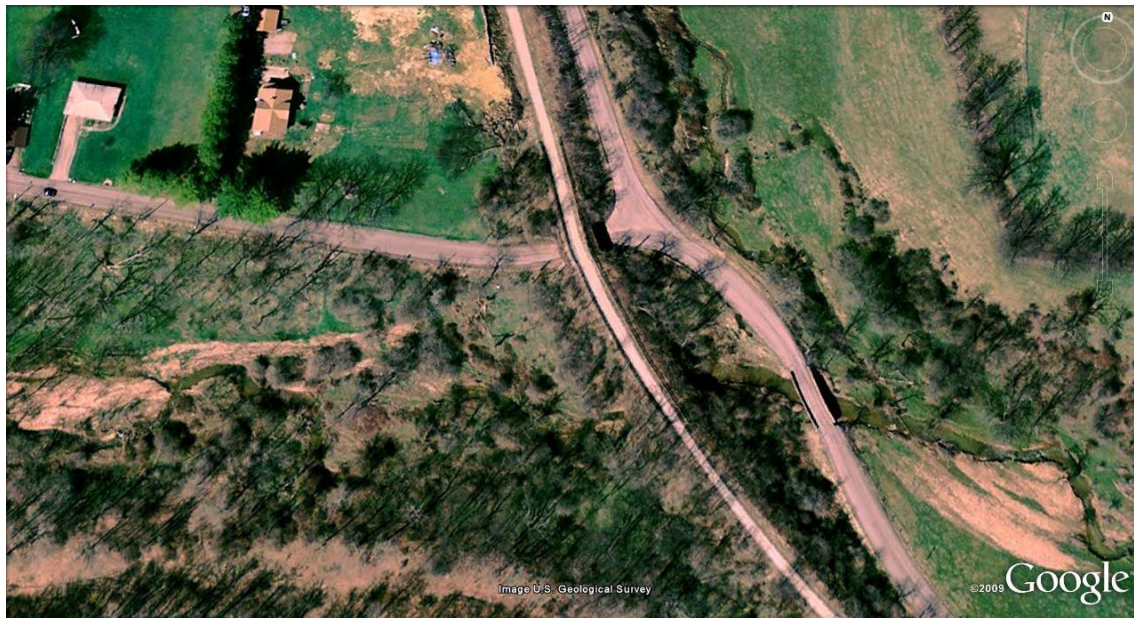
Courtesy Greg Corcoran

Topo map shows stream and bridge just below center, below “1066” marking.



Courtesy Bob Ciminell

Satellite view shows stream crossing under Southview Road and railroad (Trail). Right-of-way for spur into Montour Mine #1 can be seen in lower left quadrant beside stream.



Coal train rounding the curve at Southview is crossing the smaller arch bridge over the stream, seen below the first hopper. The bridge at the nose of the lead engine is Southview Road. The date is February 10, 1979.



Gene P. Schaeffer photo

Compiled by Montour Railroad Historical Society members