

**MP 26.2 24' Concrete Arch**

**Mile 25.1 Trail MP 24.1 Over Muse-Bishop Road near Muse Junction**

Daylighted & replaced by Steel Beam Span in 2005

View of Arch Bridge and fill, looking south along Muse-Bishop Road in April, 2005.



2005 photos courtesy Dennis Sims

The replacement bridge, 2010



2010 photos Bryan Seip

Views looking north along Muse-Bishop Road

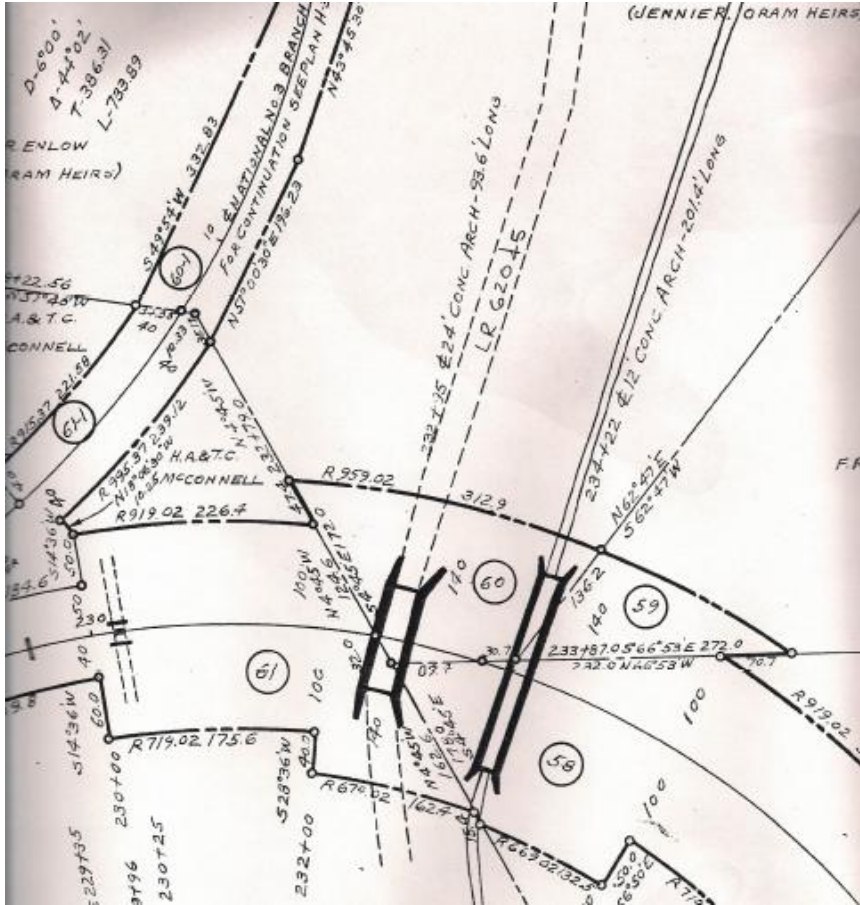


During demolition of the arch in July 2005, remnants of the date stamp of 1913 can be seen in the concrete.





Valuation plan shows the bridge and also a 12 foot concrete arch culvert that carries a stream under the railroad fill. Just east of the bridge was Muse Junction where the Muse Branch diverted into National Mine #3. After the mine closed, Chemical & Solvents Co., a chemical reclamation business, leased the mine property and was serviced by the Montour RR.



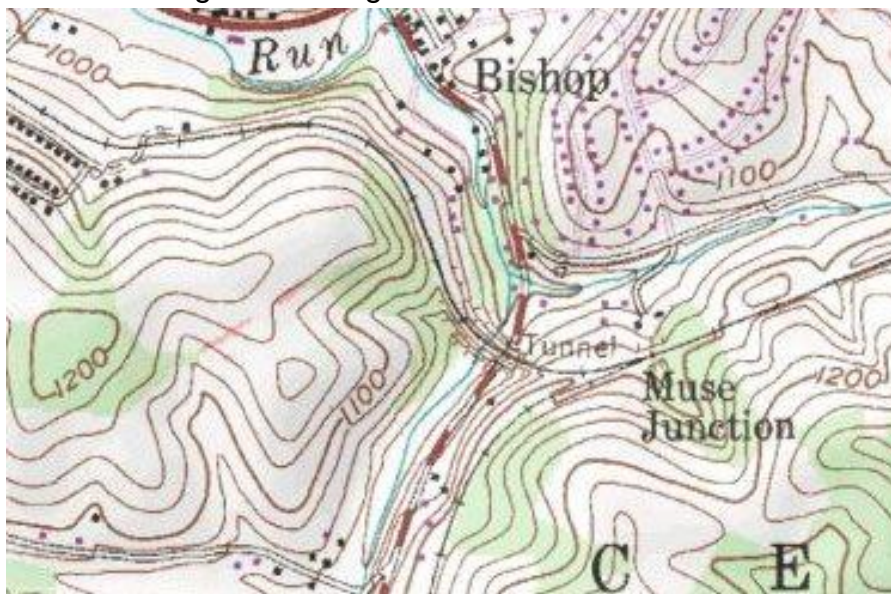
Courtesy Greg Corcoran

Satellite image shows the fill section with original arch bridge over Muse-Bishop Road. McConnell Road is at top right. The Muse Branch diverts off the main line at lower right. The bridge was about the middle of a 90 degree curve in the railroad.



Just west of this bridge was the site of a derailment on Dec. 1, 1975, where several hopper cars overturned and spilled coal loads down the embankment beside the bridge. Some local residents retrieved coal for use in their homes, and one entrepreneur built a wooden chute to send recovered coal down the embankment into a truck for transport and resale. Coal can still be seen along the embankment at this spot.

Topo map shows the railroad following around the hillside, crossing over the road on a fill and continuing along the next hillside. On this map, the bridge is marked as a tunnel, where the roadway crosses through the fill segment.



Google Image/USGS

Compiled by Montour Railroad Historical Society members