

MP 30.8 140' Through Truss Timber Deck

Mile 29.8 Trail MP 28.8 Over Pittsburgh & Ohio Central RR

Built 1914 Builder's Plate removed

Concrete deck added by Montour Trail Council, April, 2008

View looking north from inside Bells Tunnel, on former PRR branch.



Gene P. Schaeffer photo

Looking south, with bridge crossing over current Pittsburgh & Ohio Central tracks and Bells Tunnel in the background. The bridge is a Warren Truss bridge, as evidenced by the diagonal bracing, where each slants in the opposite direction of their nearest neighbor. Without the vertical supports, each panel is an equilateral triangle.



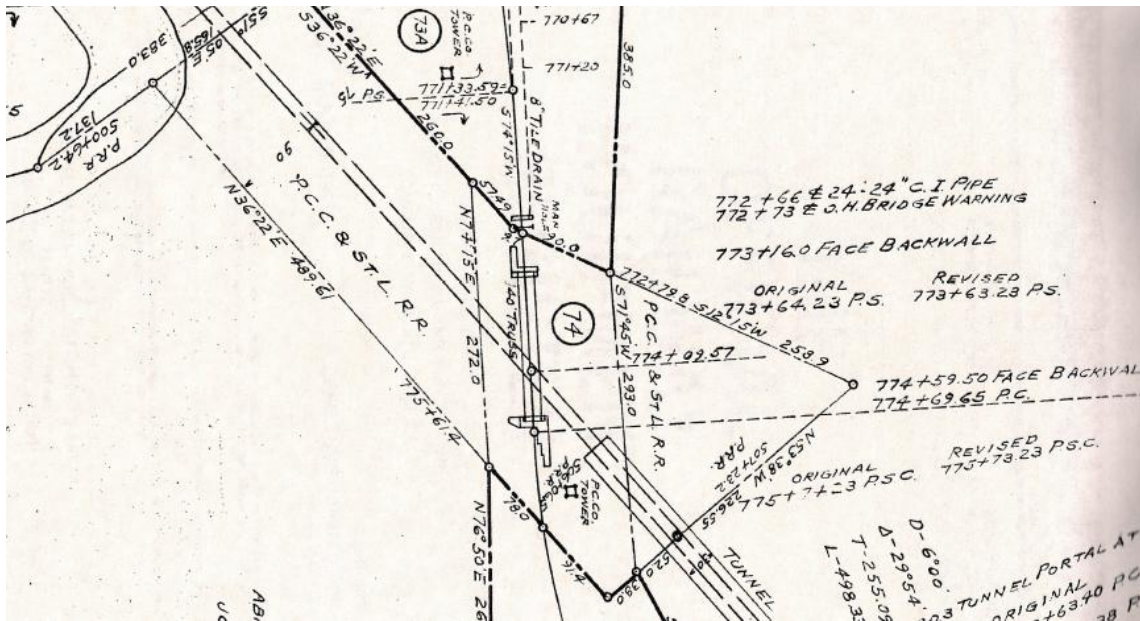
Gene P. Schaeffer photo

In 2008, a concrete deck was poured on the bridge to open it for Montour Trail traffic, as shown in 2011.



Bryan Seip photos

The Valuation Plan shows the bridge crossing the lower railroad, just outside its tunnel. The railroad marked P.C.C. & St.L R.R. was a branch of the PRR and is now operated by the Pittsburgh & Ohio Central Railroad.



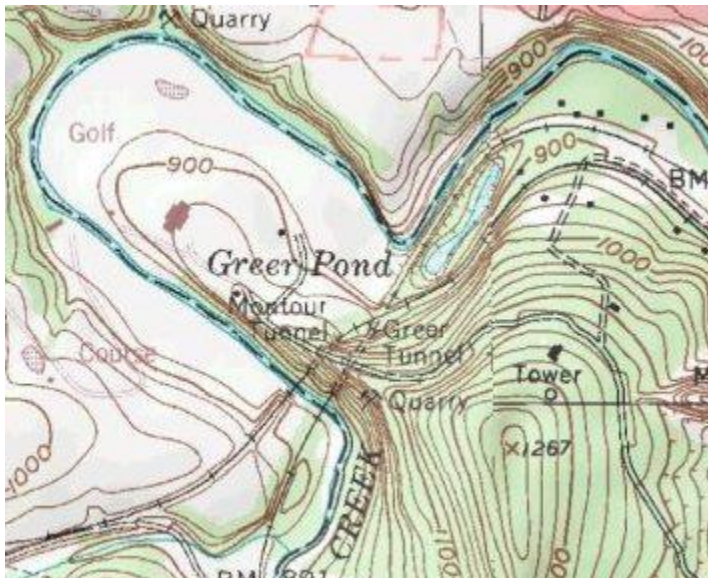
Courtesy Greg Corcoran

Satellite view shows bridge at center. Hidden Valley Road runs across middle of frame, with Valley Brook Country Club at left. P&OHC RR runs top to bottom, with Chartiers Creek in lower left quadrant.



Google Imagery / USGS

Topo map shows bridge along hill side, where railroads cross just above the “G” in Greer Tunnel notation.



Courtesy Bob Ciminel / USGS

This view shows the last Montour train to cross the bridge headed eastbound, in December, 1980. Later that day, returning with 4 empty boxcars picked up at Brookside Lumber in Bethel Park, this train was the last to operate on this portion of the railroad. Abandonment came in 1981 and tracks were removed.



Gene P. Schaeffer photo