

MP 32.6 80' Through Plate Girder Timber Deck

Mile 31.5 Trail MP 30.6 Over Brush Run at Thompsonville

Built 1913 - Builder's Plate removed

Looking west in 1944, with Pittsburgh Railways interurban trolley bridge and Rt. 19 in background.



Courtesy Gene P. Schaeffer collection

Montour #20 pulls a string of hoppers eastbound, ca. 1946.



William N. Poellot photo

Wooden safety railings were installed by Peters Township on the Arrowhead Trail.



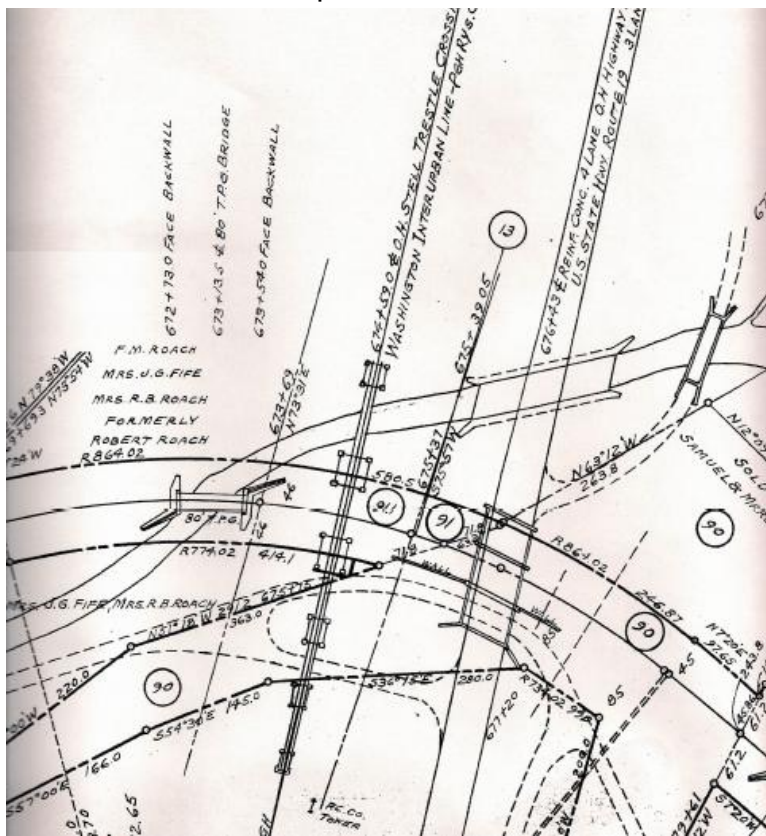
Bryan Seip photo

A wintry scene shows the bridge with safety railings.



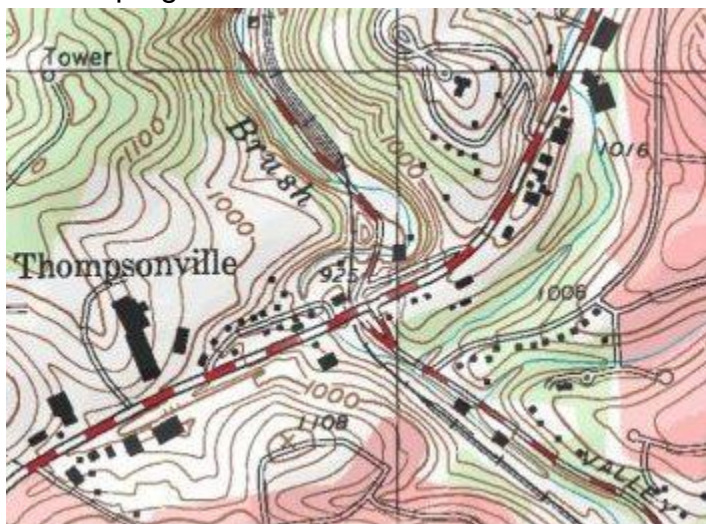
Gene P. Schaeffer photo

Valuation Plan shows bridge to left of center. Pittsburgh Railways trolley bridge is at center, with Rt. 19 to right of center. Dashed line roadway at bottom is Valley Brook Road with access ramp to Rt. 19. North is at bottom of diagram.



Courtesy Greg Corcoran

Topo map shows bridge site below center, as railroad crosses Brush Run beside the spur (ramp) coming off Rt. 19, which is the thicker red dashed road running from lower left to top right. Yard tracks for Montour Mine #4 are seen at top center.



Courtesy Bob Ciminel / USGS

Satellite view shows bridge at center. Rt. 19 runs across upper frame, with Valley Brook Road from top center to bottom right. Bridge is just left of bottom of ramp from Rt. 19 down to Valley Brook Road, at edge of tree line. St. Petersburg Center and trail parking area is at lower right, sanitation plant and trailhead parking area at top center.



Google Images

Aerial view from 1939, on left, shows trolley bridge with Rt. 19 not yet built. In 1958 view, on right, trolley bridge has been removed and Rt. 19 built beside former trolley right-of-way. Montour Railroad runs top center to bottom right in both pictures, with this bridge near center of frame.



Courtesy Penn Pilot

Two views of the bridge after abandonment of the railroad. The first, from September 1983, is looking east and shows Mother Nature encroaching on the right-of-way. The last train went across the bridge in December, 1980.



Tim Sposato photo

Looking west a year later, in October, 1984, the rails have been removed from the main line under the Rt. 19 bridge. Peters Township acquired the right-of-way in 1985 and constructed the Arrowhead Trail through the township.



Tim Sposato photo

Compiled by Montour Railroad Historical Society members