

MP 35.7 24' Concrete Arch

Mile 34.5 Trail MP 33.5 Over Sugar Camp Road

Replaced in 2013 by 145' Concrete Beam with Concrete Deck

The new bridge was completed in November, 2013. The deck is at the same height as the old right-of-way, but due to its design, road clearance under the bridge is increased.



Bryan Seip photo

View of the original bridge, looking east on Sugar Camp Road. Note signs indicating 12' 0" clearance, a problem for large trucks. A slight jog as the road goes under the arch caused sight line obstructions. These factors placed the bridge on the PennDOT replacement list.



Bryan Seip photo

Similar view in 1980, with a train showing westbound over the bridge. Railroad operations ended and this section of track was abandoned at the close of 1980.



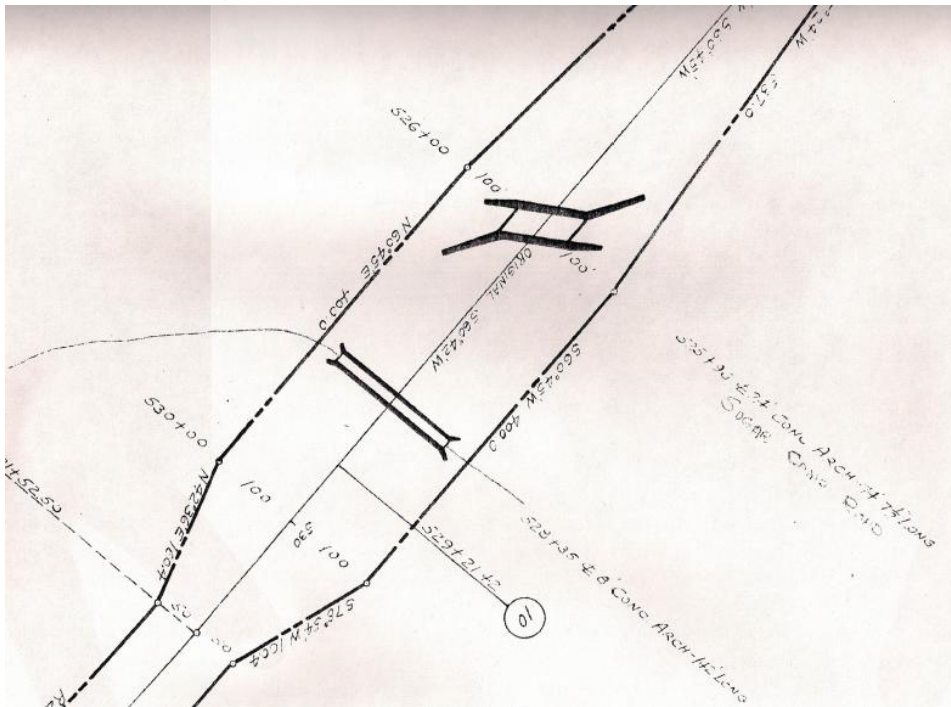
Gene P. Schaeffer photo

View looking west along Sugar Camp Road in 2010. Safety fences over bridge were added during Trail construction.



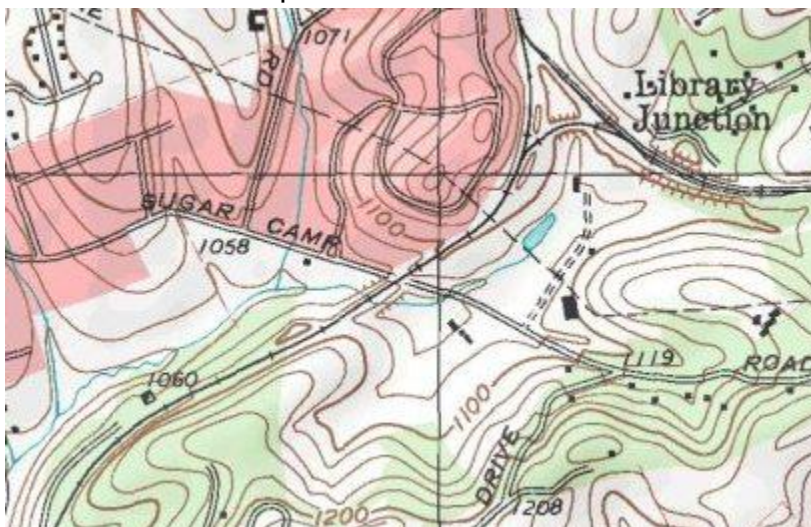
Bryan Seip photo

Valuation Plan shows bridge with skew arch construction (portals are at an angle to the side walls). Sugar Camp Road is noted, but not drawn, on the plan.



Courtesy Greg Corcoran

Topo map shows bridge at center, with Sugar Camp Road and Library Junction indicated on the map.



Courtesy Bob Ciminel / USGS

Satellite view shows bridge at center, with Sugar Camp Road running left to right, Quail Run subdivision at upper center, and Library Junction in upper right quadrant.



Courtesy Google Images

2013 view of the new bridge and safety fencing, looking east toward the horse farm. The new bridge has a 145 foot span, replacing the original 24 foot arch.



Bryan Seip photo