

MP 34.8 24' Concrete Arch

Mile 33.7 Trail MP 32.8 Over Bebout Road

Builder's date of 1913 in concrete

Removed October, 2011 and replaced by 144' steel beam span in 2012

View looking south from Valley Brook Road intersection in 1979. 12' 0" clearance presents problems for large trucks and sight lines from Valley Brook intersection limit view of traffic approaching on Bebout Road. These conditions caused PennDOT to place the arch on their list for removal and replacement.



Gene P. Schaeffer photo

View looking north. Valley Brook Road intersection is beyond bridge. 1913 builder's date is over arch.



2011 and 2012 photos Bryan Seip

Looking west across the bridge in September, 2011.



In October 2011, demolition begins and just over a week later the old arch is gone.



Winter of 2012 sees the new steel beams being set into place and by April the new bridge is completed and the trail reopened. The new span is composed of 2 steel beams for each girder, a 52 and a 92 foot section, making the new bridge 144 feet. A concrete deck was poured on top of the girders and steel decking.



Satellite view shows bridge at center. Bebout Road runs top to bottom, with Valley Brook Road running from upper left to intersection at center.



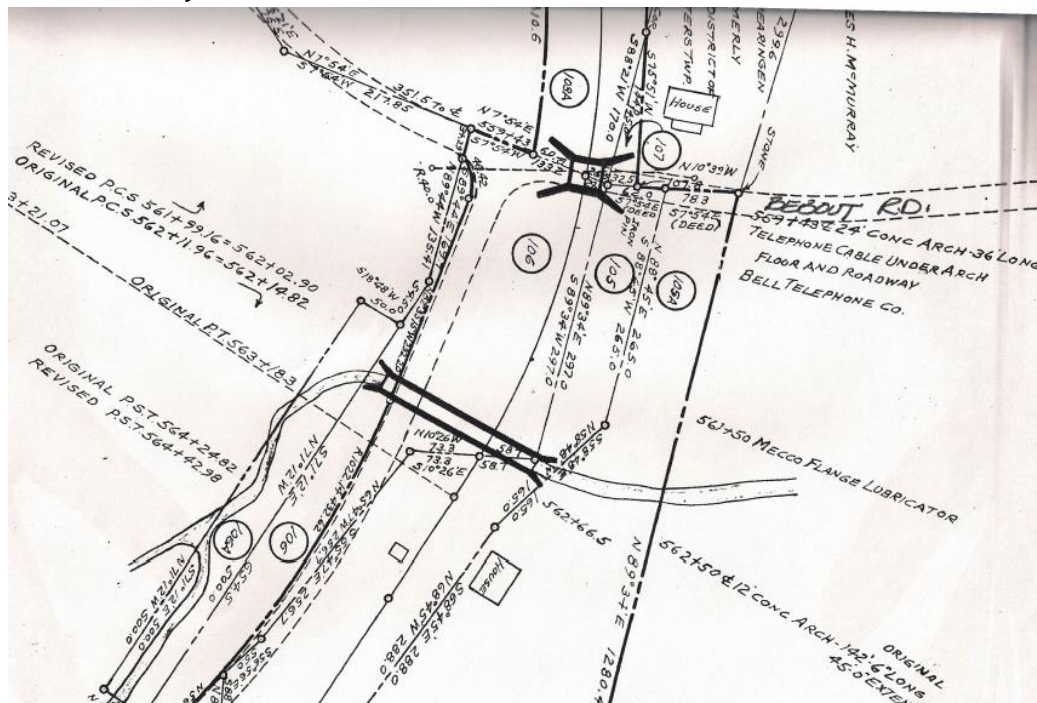
Courtesy Google Images

Similar aerial view from 1958. Driveway below railroad goes to house at left center, owned by the Montour Railroad and used by the Section Gang Foreman. Opposite the house, beside the tracks, is the McMurray Tool House.



Courtesy Penn Pilot

Valuation plan shows bridge at upper center over Bebout Road. Valley Brook Road runs from lower left to upper center at intersection. Brush Run flows under railroad in concrete culvert at center of frame. House at lower center was owned by the Montour Railroad and used by the Section Gang Foreman. The square to left of this house was the McMurray tool house. North is at left of frame.



Courtesy Greg Corcoran

Topo map shows bridge at center. Bebout Road runs top center to bottom right and Valley Brook Road center left to intersection at center at bridge location.



Courtesy Bob Ciminell / USGS