

MP 35.7 24' Concrete Arch

Mile 34.5 Trail MP 33.5 Over Sugar Camp Road

View looking east along Sugar Camp Road. Note signs indicating 12' 0" clearance, a problem for large trucks. A slight jog as the road goes under the arch causes obstructed sight lines, which has put the bridge on the PennDOT removal and replacement list.

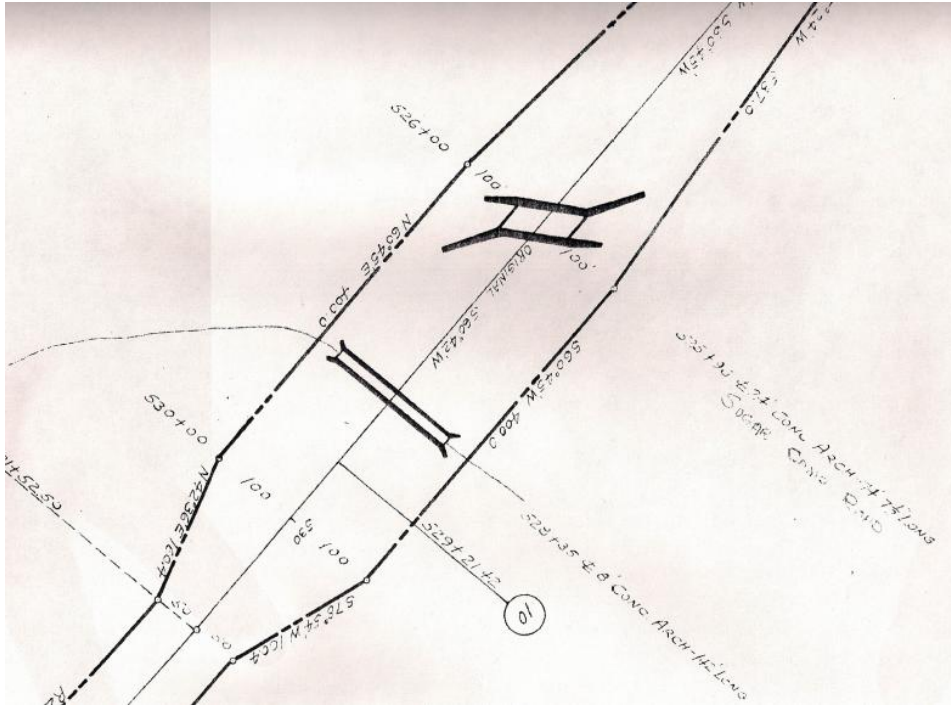


2010 photos Bryan Seip

View looking west along Sugar Camp Road

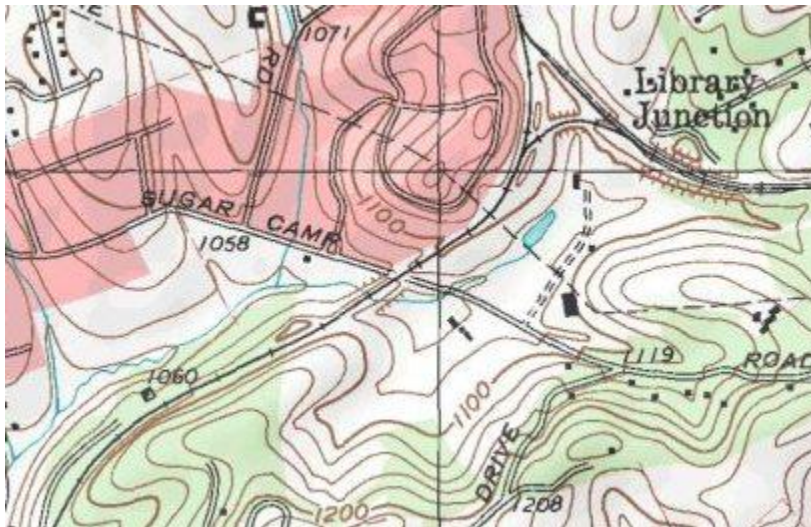


Valuation Plan shows bridge with skew arch construction (portals are at an angle to the side walls). Sugar Camp Road is noted, but not drawn, on the plan.



Courtesy Greg Corcoran

Topo map shows bridge at center, with Sugar Camp Road and Library Junction indicated on the map.



Courtesy Bob Ciminel / USGS

Satellite view shows bridge at center, with Sugar Camp Road running left to right, Quail Run subdivision at upper center, and Library Junction in upper right quadrant.

The main line of the Montour Railroad went along the left side of the wye to top of frame and continued toward Bethel Park and Salida. This is now the Bethel Branch of the Montour Trail.

The Library Branch of the railroad left the junction at the right side and ran to the right edge of frame toward Library and Snowden. This is now the main Trail toward Library and Clairton.



Courtesy Google Images

Compiled by Montour Railroad Historical Society members