

MP 39.2 24' Concrete Arch

Mile 38.1 Trail MP Bethel Branch 0 Over Logan Road at Irishtown Road

Built 1914 Removed and daylighted 1987

A Montour train crosses the bridge in 1980. The bridge abutments were a favorite target of local graffiti artists.



Tim Sposato photo

Similar location shows intersection in 2012, with bridge removed and daylighted. Montour Trail Bethel Branch MP 0 is at top of embankment to left of intersection.



Bryan Seip photo

Newspaper photo from 1966 shows east portal being painted by local residents to cover graffiti. This view is from the intersection of Logan & Irishtown Roads. The clean-up only lasted a few days before the graffiti was reapplied.



The Pittsburgh Press – Sept. 2, 1966

These views were taken during removal of the bridge in March, 1987.



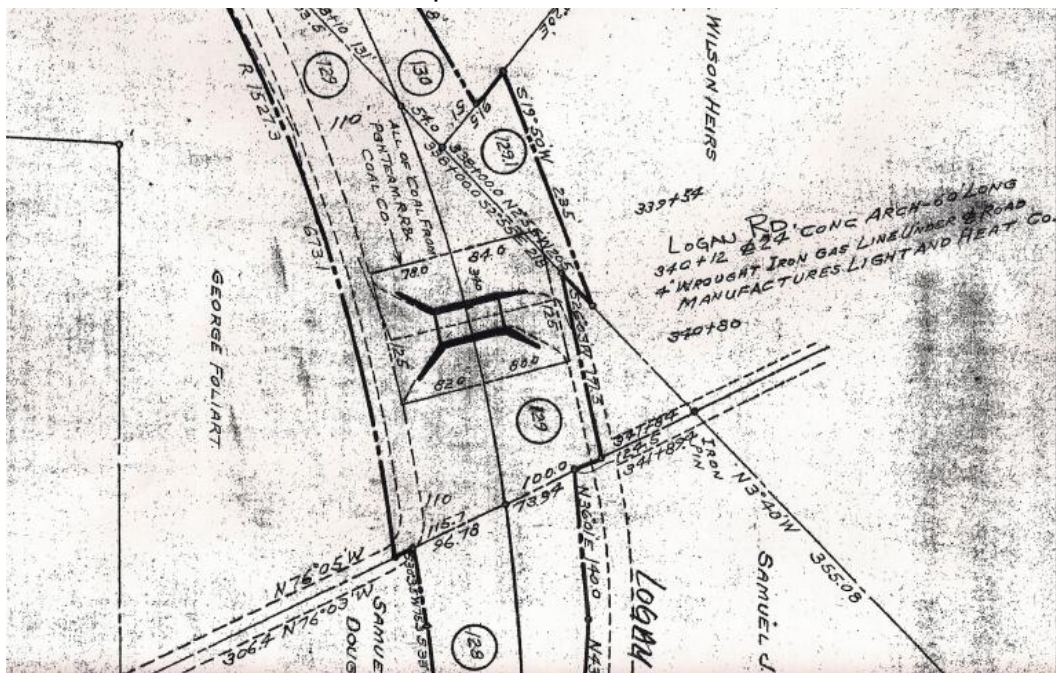
Logan & Patterson Roads.

Logan & Irishtown Roads



Gene P. Schaeffer photos

Valuation Plan shows bridge, with Logan Road noted at right, but not drawn on plan. Logan notation at bottom center is actually Irishtown Road. Bottom left dashed lines is Patterson Road. North is at top left corner of frame.



Courtesy Greg Corcoran

Satellite view shows bridge site at center. Logan Road runs from lower right to center & turns toward top center. Irishtown Road runs bottom left to center, passing Irishtown Trail parking area at lower left. Brookside Lumber is dark roofed buildings at top center. Montour Trail runs beside Irishtown Road and ends at former bridge location.



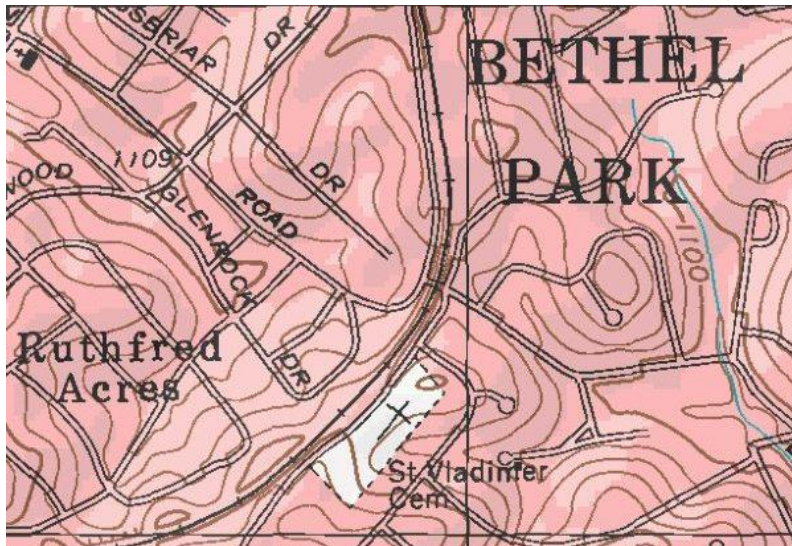
Google Images

Aerial view from 1967 shows bridge at center, with Montour Railroad running from bottom left to top center. Logan Road runs from lower right, under bridge and to top center. Brookside Lumber is at upper center and Industrial Park is under construction at top center.



Courtesy Penn Pilot

Topo map shows bridge at center, in similar framing as aerial photos above.



Courtesy Bob Ciminell / USGS

Compiled by Montour Railroad Historical Society members