

MP 5.2 49' Deck Plate Girder Timber Deck

Mile 4.8 Trail MP 3.8 3rd bridge over Montour Run at Willada

Builder's Plate removed

Over Montour Run at Hookstown Road – 1920 in concrete on far side abutment

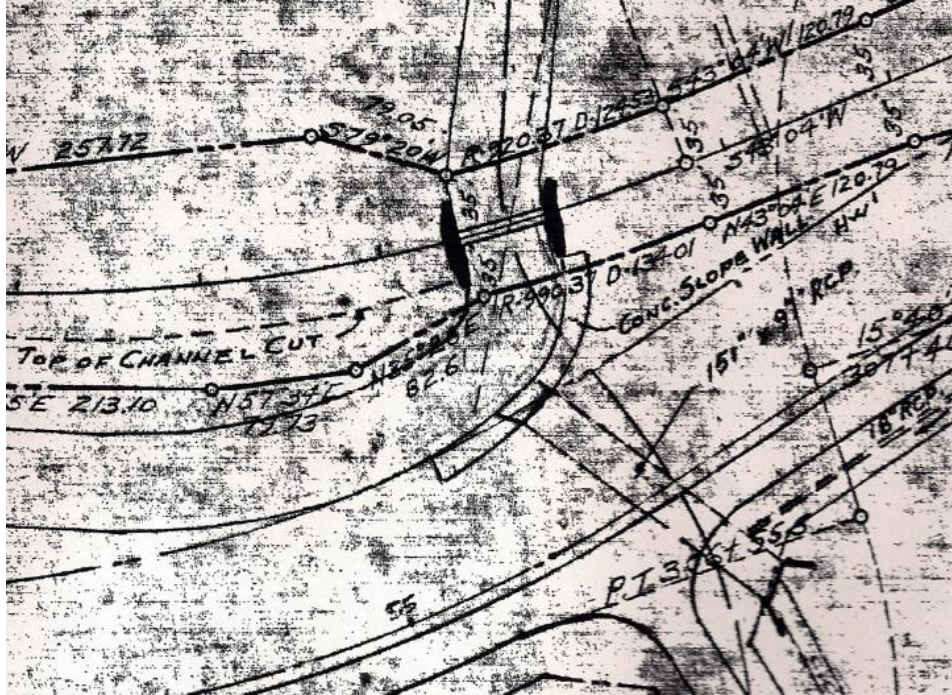


2010 photos Bryan Seip

South side of bridge – looking north toward Montour Run Road. Note sloped concrete wall & culvert on far side of bridge (downstream) that channels Montour Run around bend.



Valuation Plans show bridge and concrete slope wall channeling re-aligned Montour Run after passing under bridge. Remnants of original stream enter through culvert under Montour Run Road & Hookstown Grade Road intersection at bottom right. South is at top of diagram, so this view is “upside-down” from others.



Courtesy Greg Corcoran

Aerial view from 1957 shows bridge at lower left. Note Montour Run curving around between bridges at left side of picture, flowing left to right. Montour Run Road has yet to be constructed. Hookstown Grade Road runs across lower left beside stream.



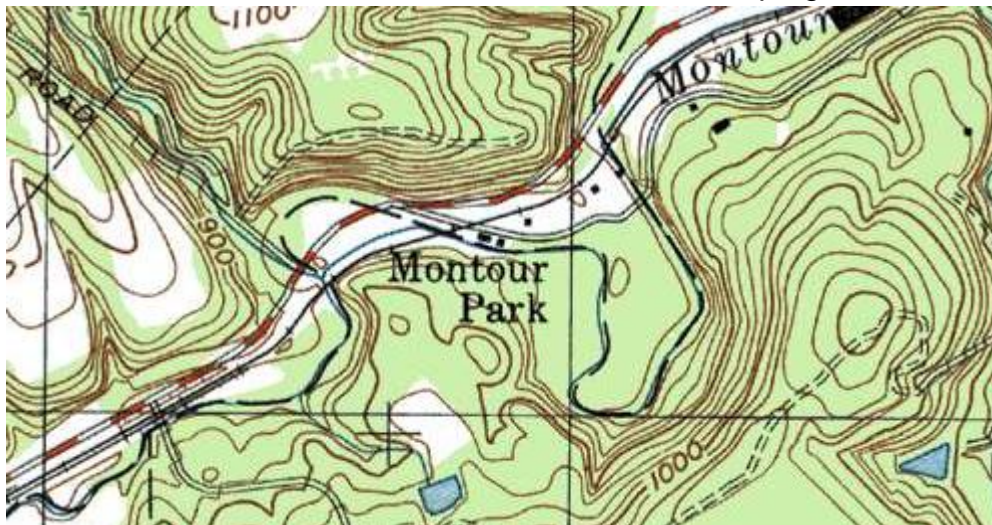
Courtesy Penn Pilot

This aerial view from 1973 after construction of Montour Run Road shows how the channel for Montour Run was relocated, cutting off the loop that went around the field across the road and forming the right-angle turn just above the bridge at lower left. Hookstown Road now ends at the intersection with Montour Run Road.



USGS Photo – Collection of Greg Corcoran

Topo map shows bridge at left center, to left of “Montour Park”. Dashed line shows original channel of Montour Run, blue line shows relocated channel due to construction of Montour Run Road, which runs from lower left to top right.



Courtesy Bob Ciminel

Looking southwest (railroad east). Hookstown Road parking area is on far side of bridge, to right of frame.



Compiled by Montour Railroad Historical Society members