

MP 8.2 70' Through Plate Girder Concrete Deck

Mile 7.5 Trail MP 6.7 Over Montour Run at Jeffreytown

Between Cliff Mine Road & Jeffreytown Tunnel

Builder's Plate: Built by McClintic-Marshall Company Pittsburgh, PA 1926

1926 in concrete abutment

Looking west (RR East) – Skew construction evident in this view. This bridge is the first of four built during 1926 realignment project to eliminate several sharp curves.



2010 photos Bryan Seip

2 views looking south



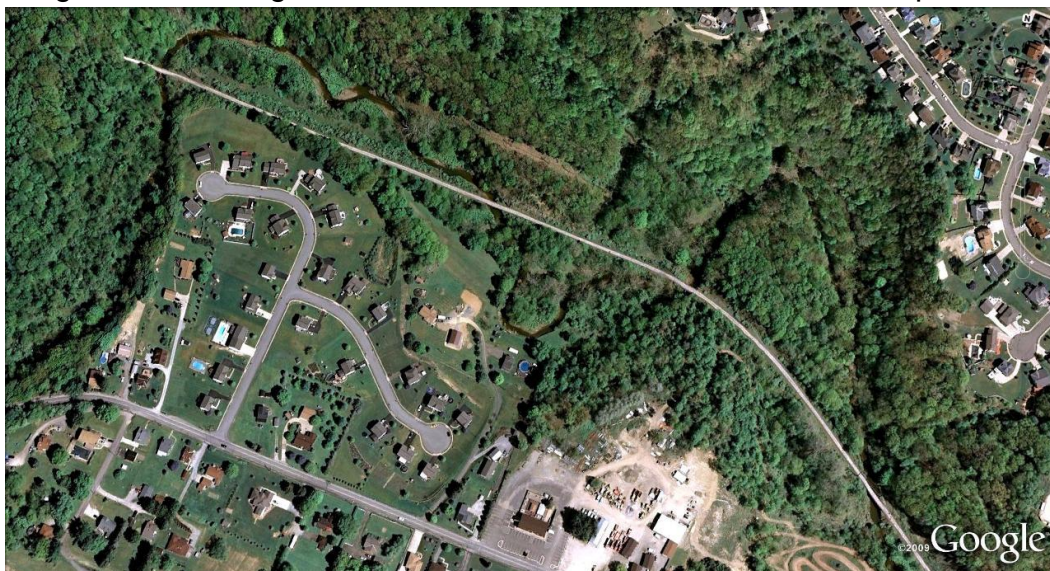
Builder's Plate: Built by McClintic-Marshall Company Pittsburgh, PA 1926



1926 in concrete abutment



Satellite view shows 4 bridges over Montour Run built in 1926 realignment project. This bridge is at lower right. Cliff Mine Road runs across lower left of picture.

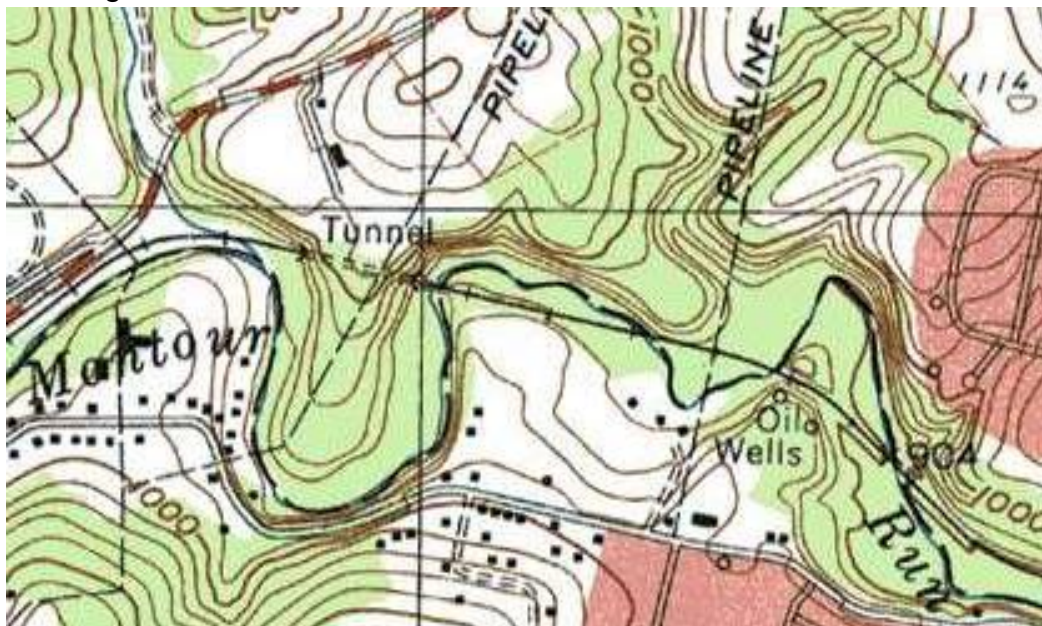


Similar aerial view from 1967 before Jeffrey Circle and Swaoger Street development. Head end of coal train has just passed bridge at lower right.



Penn Pilot photo

Topo map shows 4 bridges and tunnel. This bridge is just above the word "Run" in lower right.



Courtesy Bob Ciminel

Compiled by Montour Railroad Historical Society members