

**MP 9.8 45' Through Plate Girder Timber Deck**

**Mile 8.8 Trail MP 7.8 Over Montour Run at Enlow**

Between 5-Points intersection & Enlow Ballfield

Builder's Plate: American Bridge Company of New York U.S.A. 1912

Looking south from Main Street – builder's plate behind bush at right end of bridge.



2010 photos Bryan Seip

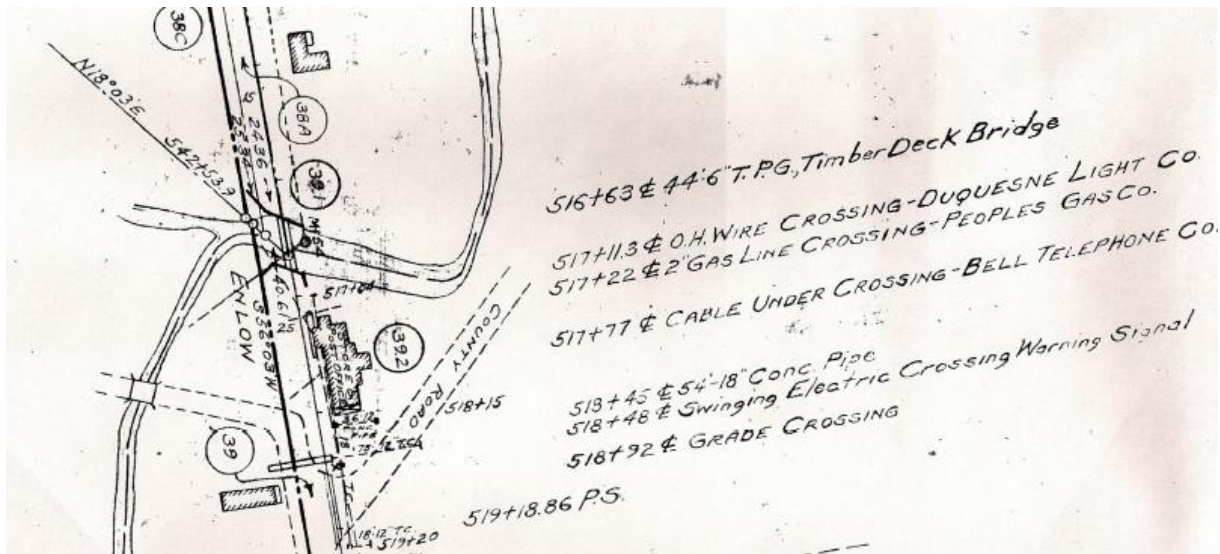
Builder's Plate: American Bridge Company of New York U.S.A. 1912



Looking south from Main Street.



Valuation Plan shows this bridge. Note building between Montour Run and County Road, (circle 39.2) listed as Store & Post Office. Also noted is a Swinging Electric Crossing Warning Signal, sometimes called a wig-wag signal. County Road shown is Cliff Mine Road.



Courtesy Greg Corcoran

Topo map also shows a building between the bridge and 5-points intersection.



Courtesy Bob Ciminel

This view of intersection in 1962 shows F. Drugmand Groceries & Meats. Bridge is out of frame to left of store.



County of Allegheny photo – Courtesy Gene P. Schaeffer

Satellite view shows bridge to right of 5-points intersection at edge of trees, as right-of-way parallels Main Street. Cliff Mine Road runs from intersection to lower right. Store/Post Office building no longer exists.



Compiled by Montour Railroad Historical Society members