

**Montour Junction Car Yard 75' Deck Plate Girder Timber Deck
Over Montour Run**

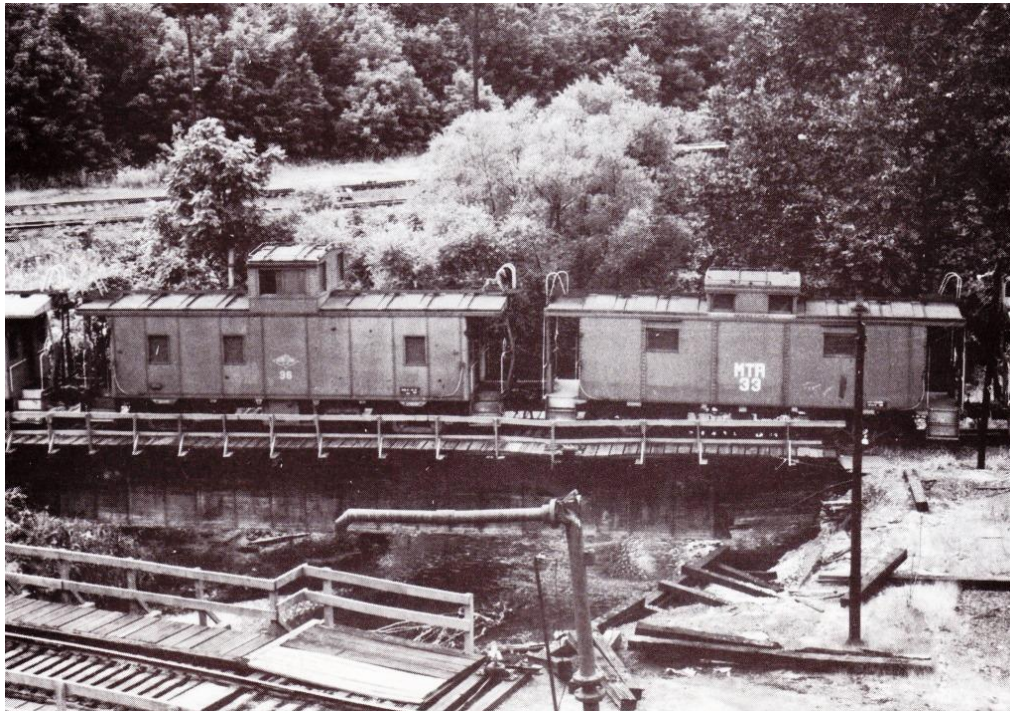
Carried lead to Car Yard over Montour Run – Bridge Removed

October, 1967 view shows bridge leading into Car Yard, with Engine House, Shops and Warehouse in background.



Fred Diebert photo

In later years, due to its deteriorating condition, engines were not permitted over bridge. This view in June, 1979, shows cabooses parked on bridge to help prevent vandalism.



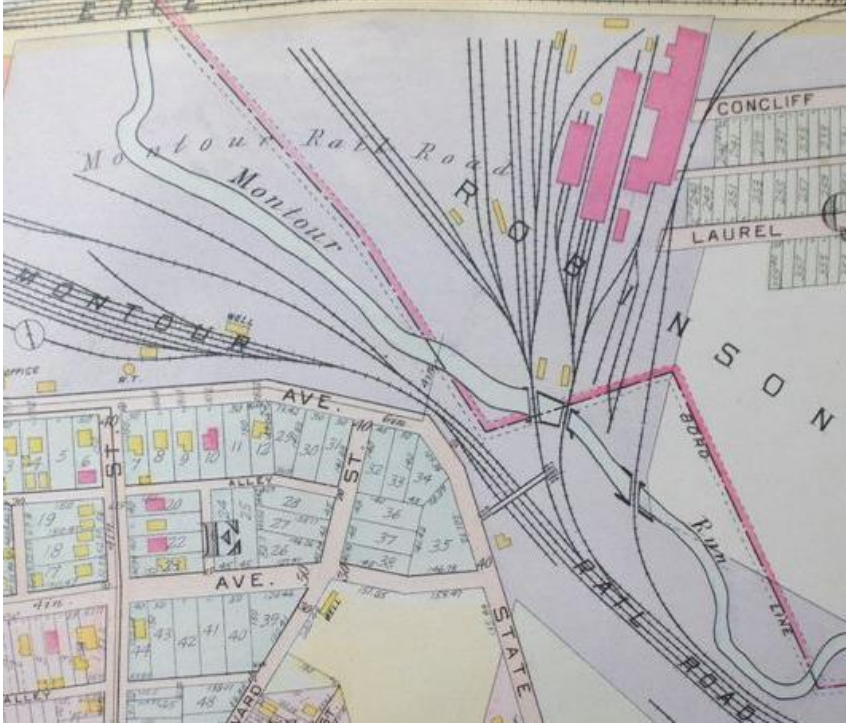
Gene P. Schaeffer Photo

1946 Aerial View shows three bridges crossing Montour Run at the Montour Junction Shops. The Car Yard bridge is the uppermost of the three, leading to the shop area where hopper cars were repaired and rebuilt.



Pittsburgh & Lake Erie Railroad Company photo

Map ca. 1905 shows the three bridges, with the Car Yard bridge on the left.



Courtesy Bob Ciminel

During the 1936 flood, loaded hoppers were parked on the bridges at Montour Junction in an attempt to stabilize and keep them from washing away. Locomotives were parked in the yard across Montour Run as it was higher ground than at the shops.



Photos courtesy Chuck A. Ross