

**Muse Branch MP 0.6    24' Concrete Slab    Over Burnside Road**  
**On Trail owned, but undeveloped, right-of-way**

Bridge and abutments built 1921, removed October, 2010

Looking East along Burnside Road in 2010.



Bryan Seip photos

Looking West along Burnside Road. Note telephone pole on right beside bridge abutment.



During October, 2010, work progresses on the removal of the south abutment with the bank behind the abutment having been dug out. The excavator is sitting on Burnside Road. Note the telephone pole on the right of the frame behind the equipment.



Mark Imgrund photo / Montour Trail Council

2011 view shows the daylighted bridge area. The bridge was just beyond the telephone pole on the right side of the road.



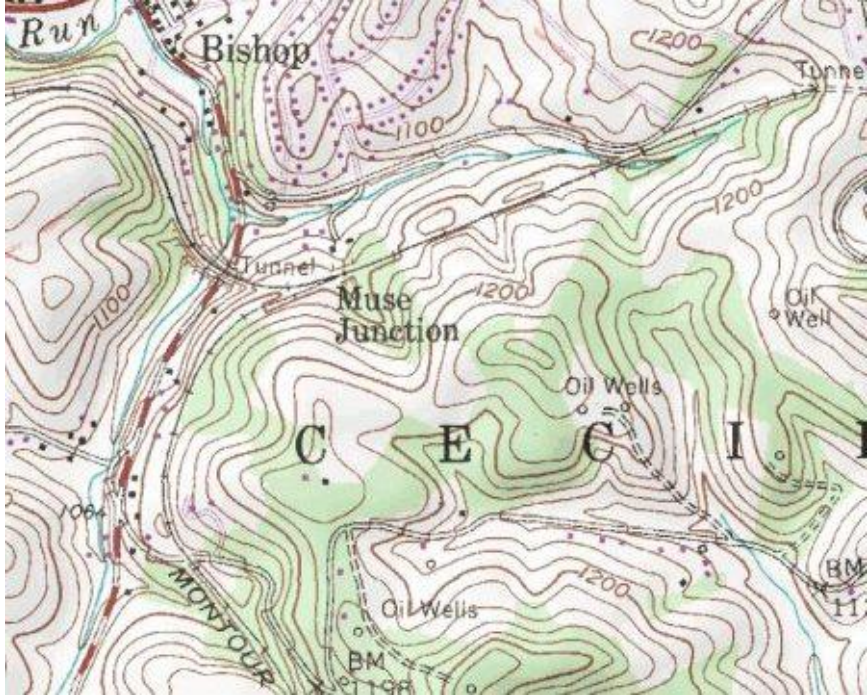
Bryan Seip photo

Aerial view from 1939 shows the Muse Branch with the bridge over Burnside Road at center. Note at lower center is a string of hoppers in the Empty Yard at National Mine #3 and loaded hoppers below the tipple running beside the Muse patch houses. Muse Junction is in upper right of frame at tract of dark trees.



Courtesy Penn Pilot

Topo map shows Muse Branch running along hillside from Muse Junction. Bridge over Burnside Road is at lower left, just above the “M” in Montour.



Courtesy Google/USGS

Compiled by Montour Railroad Historical Society members