

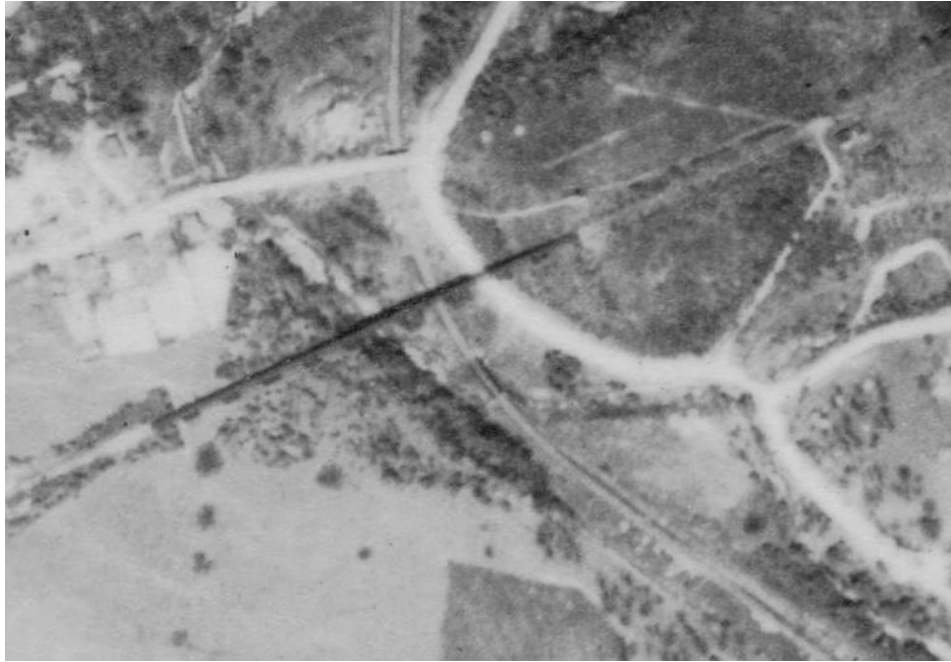
Between the bridge over Brush Run and Rt. 19, at one time the Pittsburgh Railways interurban trolley crossed over the Montour main line. The trolley bridge can be seen in several of the pictures of the Montour bridges near Rt. 19 – this one from 1944.



Here is another view - from Bill Poellot ca 1949 as #51 shoves east thru Thompsonville. Bill says this is a “mediocre” shot, and the smoke plume obscures part of the trolley bridge, but I think any picture of Montour steam at work is a big plus.



The trolley ran before there was a Rt. 19 - as this Penn Pilot from 1938 shows the trestle crossing Valley Brook when the road to Washington included Thompsonville Road to the north (center right) and what is now Camp Lane to the south (center left)



This view from 1958 shows Rt. 19 completed, but the trolley bridge has been removed. Trolley service ended in August 1953.



The only thing remaining of the trolley bridge is the north end abutment, which sits beside a parking lot behind a business along Rt. 19. It will probably become a victim of the Rt. 19 / Valley Brook intersection & access ramp realignment project.



The trolley line ran south toward Donaldson Crossroads and curved west just about where the entrance to the Forest Lawn Gardens cemetery is now located and ran under Rt. 19 where the chapel is now located.. This was then the Cheeseman farm and the “new” Rt. 19 actually ran between the farmhouse and the barn. This picture was taken from beside the Rt. 19 bridge.



This picture was taken at the Cheeseman Stop, at present day Old Oak Road. The new Rt. 19 bridge is in the background, along with the Cheeseman farm house. The house sits in the middle of the current Volkswagen dealership.



The right-of-way can still be seen on the west side of Old Oak behind the VW place, running between the houses there. It continues west and crosses McMurray Road beside McMurray Hills Manor, recognizable as a row of trees that have grown along the right-of-way in the past 50 years.

A little story that Bill Poellot told me:

The old 2-lane Rt. 19 bridge was one of those open grate decks that “sing” when you drove across it. One day, a road line-painting crew was working on Rt. 19 and crossed the bridge, just as a trolley ran underneath. Since both vehicles were moving, the trolley got a nice diagonal stripe painted across its roof, which remained for quite a while on that particular car.

I wonder who was more surprised – the motorman or the paint crew??