

Westland Branch MP 2.7 10' Concrete Slab

Built 1927 Over farm access road along Hornhead Road

Removed 2012

2011 view from Hornhead Road showing how the bridge provided access into farm fields on opposite side of railroad.



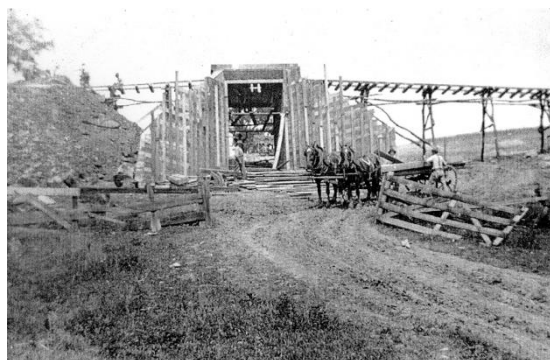
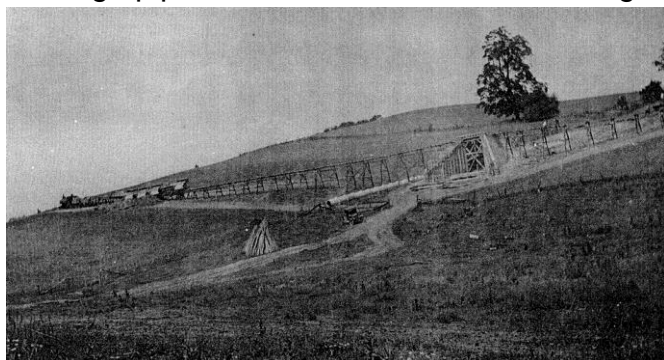
Bryan Seip photo

Similar viewing angle, from 1979, shows a train of empty hoppers headed for Westland. Note concrete drainage culvert at fence line, below cab of 4th locomotive.



Gene P. Schaeffer photo

Bridge and fill under construction on John S. Hutchison farm in 1927. 36" concrete drainage pipe can be seen to the left of bridge forms.



Photos by Esther Cowden Hutchison – courtesy Jean Ferris

Aerial view from 1939 shows the bridge just above center, at lower end of left-hand curve. Hornhead Road runs top to bottom. Smaller farm road runs from Hornhead Road to bridge and into farm fields.



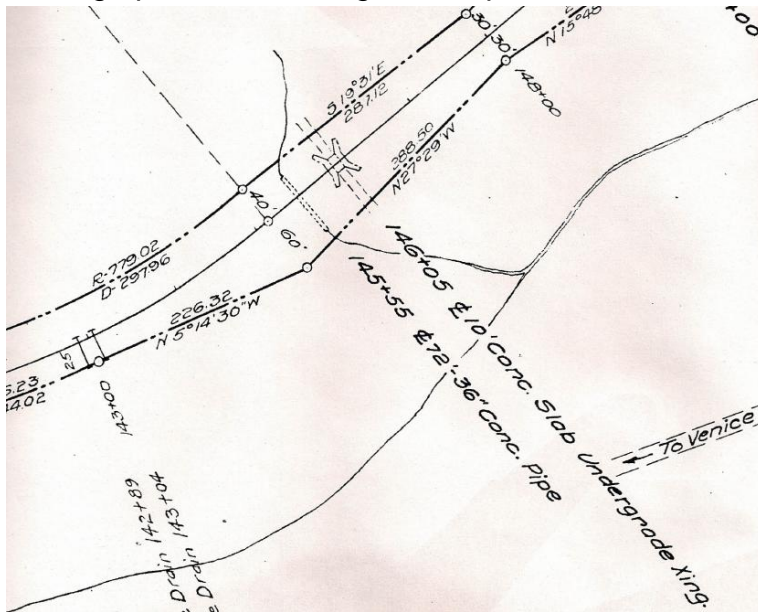
Courtesy Penn Pilot

View in 2012, after railroad reconstruction, shows bridge removed and replaced by a retaining wall. The concrete culvert remains in place (to the left of the big tree). The bridge was located behind the tree. Farm access into the fields on the other side of the railroad has been changed to a near-by grade crossing.



Bryan Seip photo

Valuation plan shows bridge just past end of curve. Road marked "To Venice" at lower right is Hornhead Road. Opposite direction is toward Westland. 36" concrete pipe next to bridge provides drainage to keep water from flowing through bridge underpass.



Courtesy Greg Corcoran

