

## Boggs Mine (Bob Ciminel ©2012)

The Boggs Mine was located south (timetable east) of Solar Mine and north of U.S. Route 22. It was a slope mine, owned by the Montour & Lake Erie Coal Company, headquartered in Pittsburgh. There is very little information about this mine, suggesting that it may have been known by another name during its lifetime. The mine was eventually taken over by the Pittsburgh Coal Company. There is a reference to a Montour & Lake Erie Mine No. 1 in the records at the same location as Boggs Mine.

To add further confusion, the M&LE Coal Company Mine No. 1 was supposedly serviced by the M&LE Railroad, which never existed. To top it all off we have a listing below that shows the Boggs Mine being serviced by the M.G.A Railroad, the reporting marks for the Monongahela Railway.

However, we can probably assume that the M&LECCo was run by Mr. James Boggs, and that the mine was named after him; that it truly was a slope mine and the Pittsburgh seam at the mine's location was about 5 feet thick (that was the average thickness for the seam in western PA). The daily capacity of 400 tons seems very low when you consider that the older Montour mines (Dickson and Cliff) were producing up to 1,000 tons per day using picks and shovels.

Montour & Lake Erie Coal Co.  
Flannery Bldg., Pittsburgh, Pa.  
Pres. .... James S. Boggs  
Boggs Mine  
P.O. .... Imperial, Allegheny Co., Pa.  
Ship ..... Boggs, M. G. A. R.R.  
Seam ..... Pittsburgh 64 in. Thick  
Kind of Opening ..... Slope  
Daily Cap .....400 T

Boggs Mine is listed on the 1940 Montour Railroad employee timetable, but only as a loading platform, not a tipple, indicating that coal was being loaded from trucks.

The details of the mine are show in the following images:

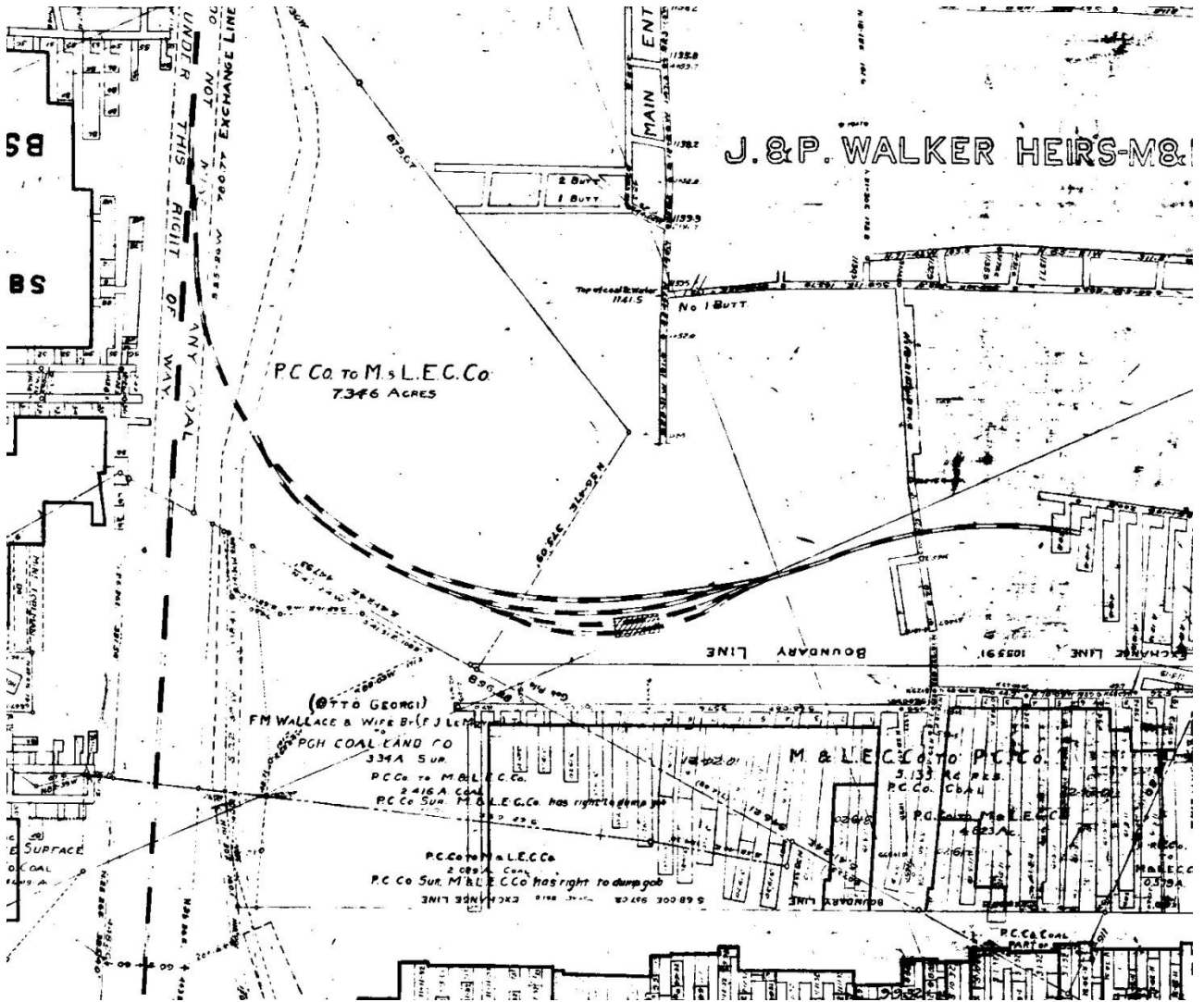
This Google Earth image shows the former site of Boggs Mine.



This 1939 aerial photo shows the Boggs tipple with a small string of hopper cars in the empty yard and three loaded cars. The spur to the mine is located at the east end of Boggs Yard. The slope entry extends southwest from the tipple.



This mine map shows the spur leading into Boggs Mine (the Champion coal washer would be at the top of the map) and also shows that the Pittsburgh Coal Company was the original landowner of 7 acres. The slope entry is also shown. Note that the mine also extended north via an entry under the loaded yard track. Solar Mine would be at the bottom of the map.



This 1930s era WPA mine map shows Boggs Mine straddling the Allegheny-Washington county line.

