

## Russell No. 2 Mine (Bob Ciminel ©2012)

Russell No. 2 Mine was located west (railroad east) of the North Star wye on what was originally the Solar Mine Spur. Russell No. 2 was a strip mine that opened sometime after 1941 and was stripping the coal pillars left in the abandoned Partridge Mine on the north side of Boggs Road. Russell No. 2 closed sometime after 1968.

The history of Russell No.2 can best be described using aerial photos taken between 1939 and 1967 and shown below.

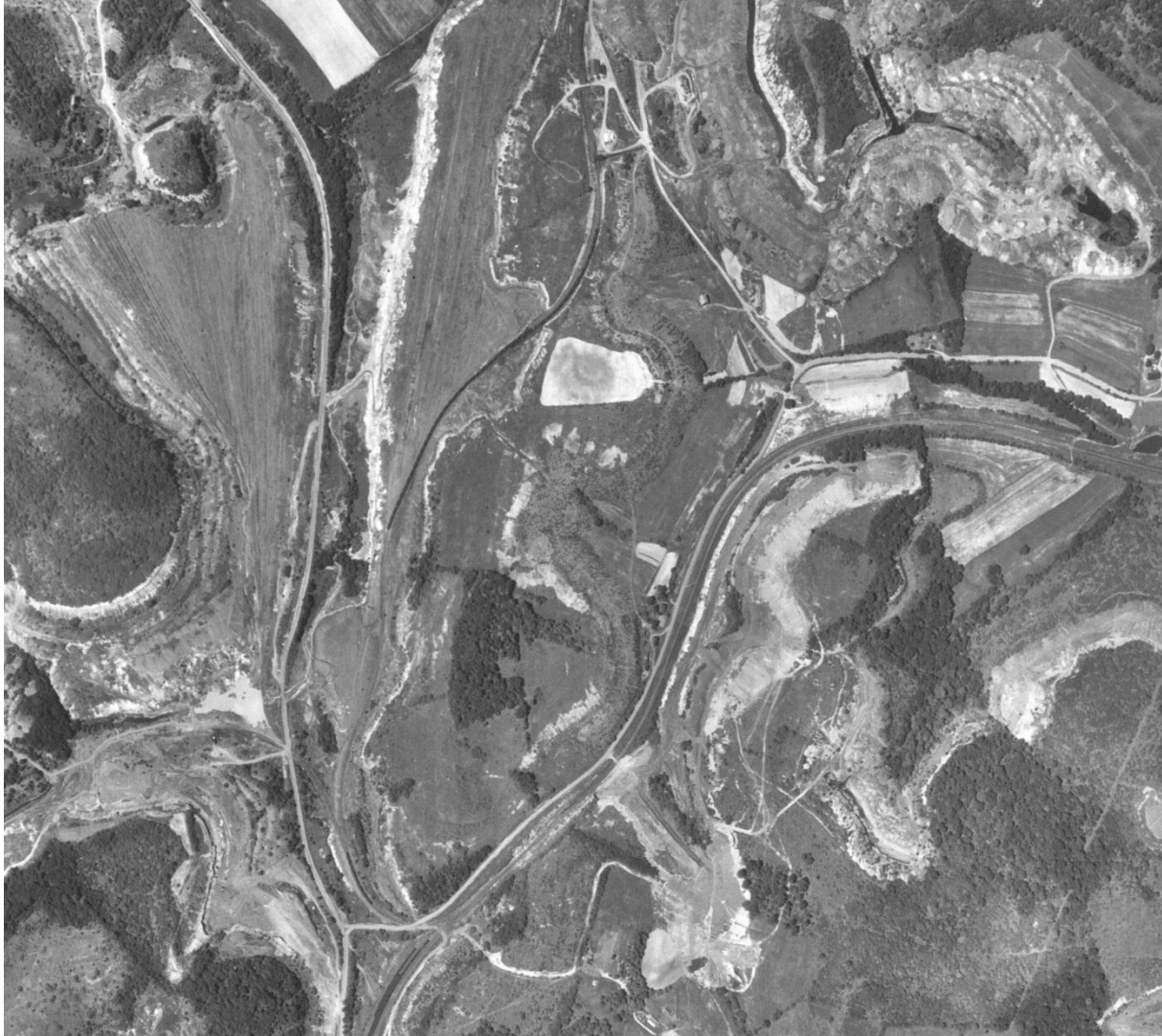
This is the location of Russell No. 2 Mine as shown in July 2010 with the BFI Waste Dump now occupying the old strip mine. Remnants of the Champion waste dumps are still visible along both sides of Potato Garden Run Road.



This 1936 aerial photo shows Solar Mine on the left and the Champion waste dump to the north. Russell No. 2 will eventually open to the north of the waste pile east of Solar Mine. I believe that waste dump was being used by the Solar Mine, but I can't tell if there were rails going into the dump.



This 1958 photo clearly shows a string of hopper cars on the spur leading to Russell No. 2 and active strip mining in progress. The Montour is using the old track to the former Champion waste dump to reach the mine tippie at the top of the photo. By this time, Champion was dumping its waste in the valley west of PA Route 980 across from the coal washer.



By 1967, stripping has ceased, the tibble was torn down and the former mine spur used for storing hopper cars during the economic downturns that plagued the soft coal industry. There are some cars visible on the track to the former waste dump.



This is an enlargement of the 1958 photo that shows the Russell No. 2 tippie. Trucks from the strip pits would back into a dump to the right of the road and coal was conveyed underneath the road to the tippie.

